

**brother**  
at your side

DIRECT TO GARMENT PRINTERS



DO MORE THAN YOU EVER  
THOUGHT POSSIBLE.

2 ..... HISTORY OF BROTHER DTG



4 ..... T-LOCK PLATEN



14 ..... DTG PRETREAT



16 ..... SLEEVE PLATEN



17 ..... OVERSIZED PLATEN



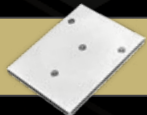
18 ..... XL PLATEN



20 ..... YOUTH PLATEN



21 ..... BABY PLATEN



22 ..... GRIPPER KIT



24 ..... SHOE PLATEN



26 ..... CAN COOLER JIG



### COMPATIBILITY GUIDE

541 GT-541

782 GT-782

3 GT-3

X GTX

pro GTXpro

brother  
at your side

# A proud history of DTG leadership.

As a pioneer in direct to garment printing, Brother always seeks to bring new features and advanced technology to an industry that demands to be on the cutting edge. That's why screen printers, embroidery shops, fashion designers, online fulfillment companies and many other types of businesses rely on Brother to expand their markets with unique customized products creating new revenue streams.

**brother**  
at your side



**1999**

Brother began research for direct to garment printing.

**2003**

The first beta testing was conducted on a Brother designed and manufactured DTG printer.

**2005**

Brother launched its **GT-541** DTG printer at the ISS show in Atlantic City. This model is a CMYK only printer.

**2008**

Our first DTG printer featuring white ink, the **GT-782**, was introduced at the SGIA Expo. This high-volume printer contained dual platen system for printing two shirts simultaneously.

**TIMELINE**



## 2012

Brother releases its GT-3 series printers that combined a compact design with industrial capabilities. The **GT-361** and **GT-381** models featured CMYK+W inks to help companies of any size print full color garments.



## 2017

Brother reveals the next generation of DTG printers – the **GTX**. This high volume production unit features advanced print heads and a newly developed Innobella Textile Ink chemistry for a larger color gamut.



## 2020

With new features developed specifically for high-volume print shops, Brother's newest DTG model represents another new beginning for the company with the introduction of the **GTXpro B's** advanced ink system using bulk ink.



## T-LOCK PLATEN KIT

PART# TLOCKKIT

COMPATIBLE WITH



Multi-purpose platen kit for printing on a variety of sizes and shapes of items.  
Also allows for users to create custom platens based on needs.



**T-Lock Platen Kit** comes with interchangeable platen inserts to allow Brother DTG users the ability to switch from one platen setup to another quickly and easily.

#### INCLUDED PLATEN INSERTS

- **Youth** (10" x 12")
- **Baby** (7" x 8")
- **Long Sleeve** (4" x 14")
- **Two Squares** (4.25" x 4.25")
- **Zipper** (up to 14" x 16")
- **Two Polo Inserts**



brother

GTX pro

BABY INSERT



brother



YOUTH INSERT



SQUARE INSERT  
ON H-BASE



WRAPAROUND  
INSERT



ZIPPER INSERT



LONG SLEEVE  
INSERT ON H-BASE





PART# TLOCK-CAPK

COMPATIBLE WITH

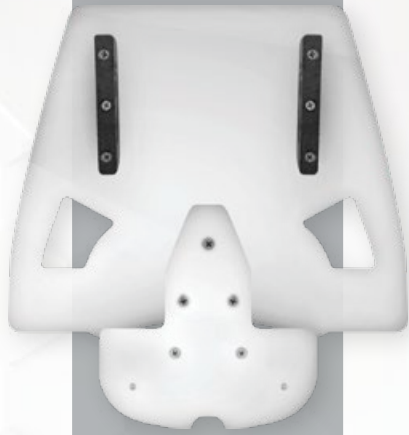


## T-LOCK CAP PLATEN

**T-Lock Cap Platen Kit** is a great accessory platen for customizing a variety of types of headwear – including prints that cover the crown and bill of caps.



CAP INSERT



LARGE RISER



SMALL RISER



SPACER



## CAP PLATEN INSTRUCTIONS

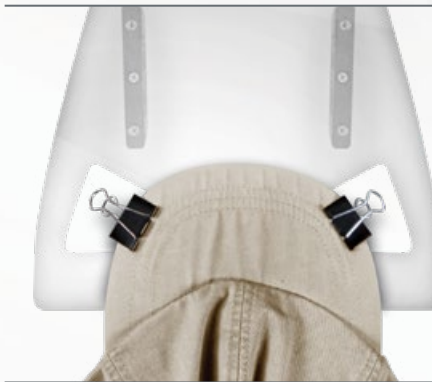
### STEP #1

Flip the sweatband down and pull back to front of the riser.



### STEP #2

Secure the bill with black clips.



### STEP #3

Flatten crown and secure back with black clips.



PART# TLOCK-OSI

COMPATIBLE WITH

541 782 3 X pro

## OVERSIZED INSERT

The **T-Lock Oversized Insert** is a 16" x 18" insert designed for creating oversized prints good for up to 4XL sizes.



PART# TLOCK-WAPI

COMPATIBLE WITH



## WRAP AROUND INSERT



The **T-Lock Wrap Around Insert** is a U-Shape insert designed for creating fashion prints that wrap around the front to the back of the garment for unique style print.





## SHOULDER INSERT

PART# TLOCK-SHLD

COMPATIBLE WITH

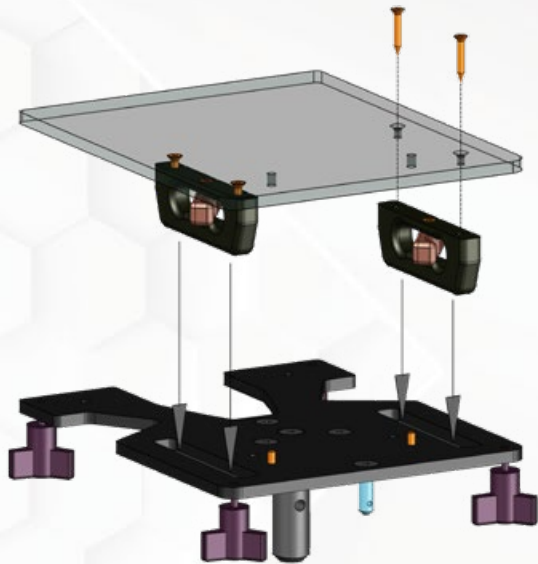


The **T-Lock Shoulder Insert** is a flippable platen insert that allows for prints to fall off the shoulder and onto the sleeve to create a unique fashion print.



PART# TLOCK-BRCKT

## BRACKETS



Want to create your own platen insert?  
Order a set of **T-Lock Brackets** and  
create the platen insert your shop needs.





## DTG PRETREAT

PART# DTGP

COMPATIBLE WITH

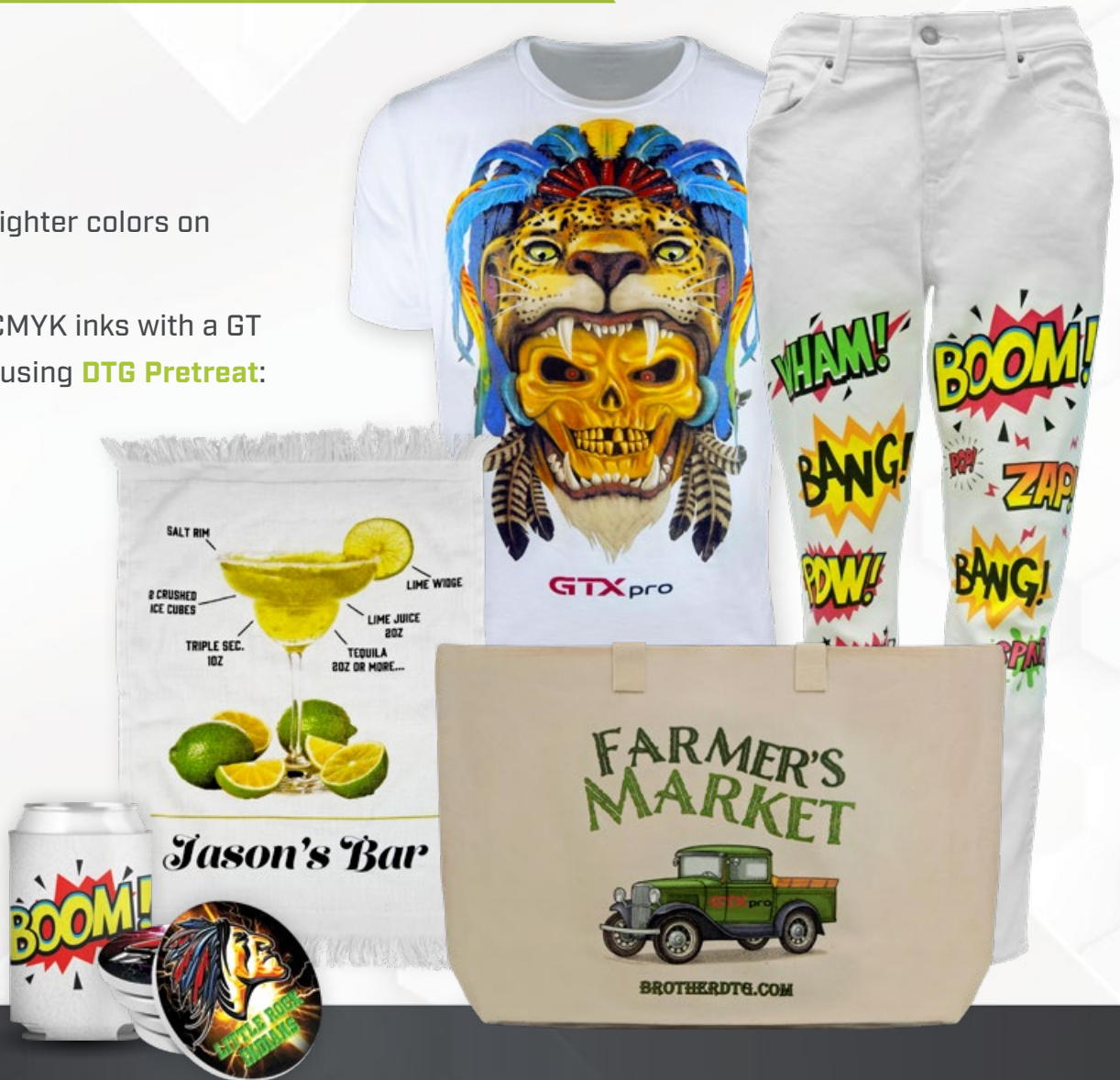


A light garment (CMYK only) pretreat for brighter colors on polyester, blends and cotton garments.

Expand the products you offer by printing CMYK inks with a GT printer to include the following items when using **DTG Pretreat**:

- 100% Polyester Garments
- Blend Garments (i.e. 50/50, 65/35)
- Mouse Pads
- Can Coolers
- Polyester Flags
- Tote Bags
- Bamboo Fabric
- Silk Fabric
- and many more items!

Get brighter colors and better washability with **DTG Pretreat**.



## DTG PRETREAT INSTRUCTIONS

### STEP #1

Apply the pretreat based on fabric content



### STEP #2

Cure the pretreat at 356° F for 20-30 seconds.



### STEP #3

Print the pretreated garment using CMYK inks only.



### STEP #4

Cure the printed garment at 356° F for 35 seconds.







## SLEEVE PLATEN

PART# GTPSP

COMPATIBLE WITH



The **Sleeve Platen** enables printing on short and long sleeves up to 4.5" x 16".

Simply thread the sleeve onto the platen and use clips to secure the sleeve in place to the bottom piece of metal.



PART# **S80525201**

COMPATIBLE WITH

782

3

X

pro

## OVERSIZED PLATEN



Be the source for large prints that can satisfy sizes up to 4XL using this 16" x 18" platen.



PART# SB6992001

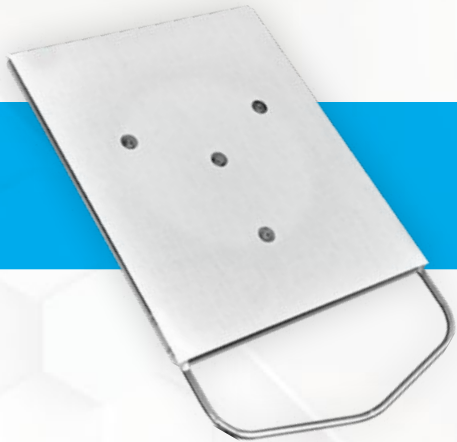
COMPATIBLE WITH



## XL PLATEN

Make a big impression and print on an area up to 16" x 21" for oversized designs on XL items.





## YOUTH PLATEN

PART# SA6399601

COMPATIBLE WITH



This 10" x 12" platen is great for printing on youth and ladies garments.

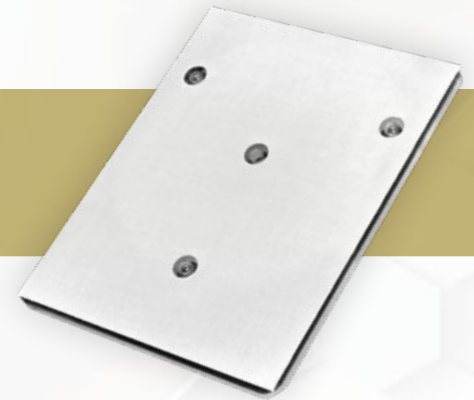


PART# SA8213601

COMPATIBLE WITH



## BABY PLATEN



This 7" x 8" platen is sized to print a variety of pint sized clothing for the smallest customers. Print body suits and infant shirts using this platen.





## GRIPPER KIT

PART# GRIPA, GRIPY, GRIP0

COMPATIBLE WITH



This add-on platen device mounts to the bottom side of a Brother DTG platen and is used to hold items in place during the printing process.

### AVAILABLE FOR

- **Adult Platen**
- **Youth Platen**
- **Oversized Platen**



brother

GTX pro



brother

GTX pro

K

Y

C

K

PART# **SPCK**

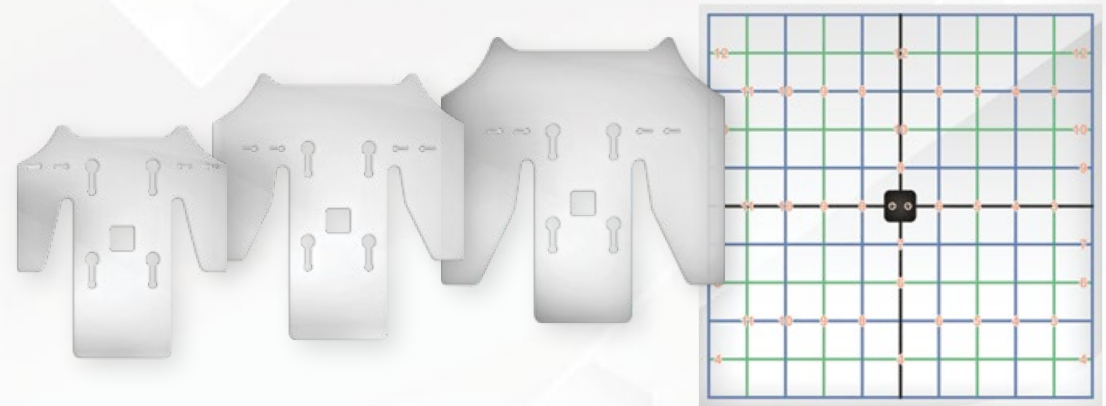
COMPATIBLE WITH

**541** **782** **3** **X** **pro**

## SHOE PLATEN



Diversify your product offering by providing customized footwear to your customers. The **Shoe Platen** comes with a Mounting Kit, three sizes of shoe inserts and an alignment grid.





## SHOE PLATEN INSTRUCTIONS

### STEP #1

Select insert and cover with double-sided tape.



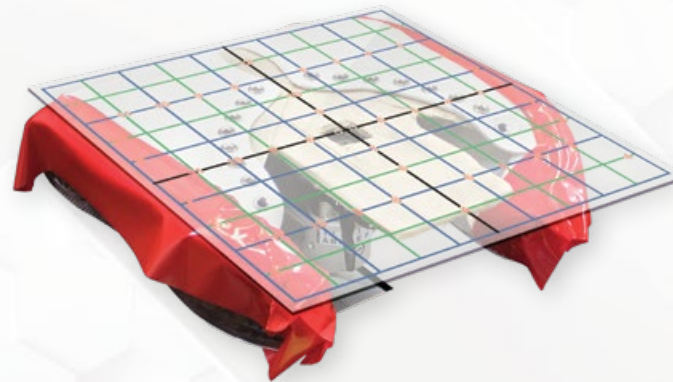
### STEP #2

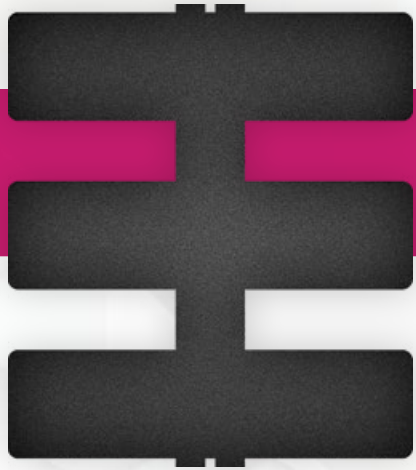
Mask off areas of shoe not to be printed and align the shoes on the insert and press down.



### STEP #3

Align artwork with included grid or Acculine.  
*[Acculine is an additional purchase.]*





## CAN KOOLER JIG

PART# CKJIG

COMPATIBLE WITH



From parties and tailgates to just not wanting to hold a cold drink, create customized can coolers for any occasion. This jig will hold up to six collapsible can coolers and fits directly on top of the Brother Adult platen.





[BrotherDTG.com](http://BrotherDTG.com)

1-866-750-2543

[BrotherDTG.com/Support](http://BrotherDTG.com/Support)



Images are for illustrative purposes only. Specifications subject to change.