

T-Lock Shoulder Insert Instructions

Items Needed for Installing T-Lock Shoulder Insert:

T-LOCK Shoulder Insert - #TLOCKSHLD

T-Lock Shoulder Platen Insert

T-Lock Base - #TLOCKBASE

T-Lock Base needed for using Inserts

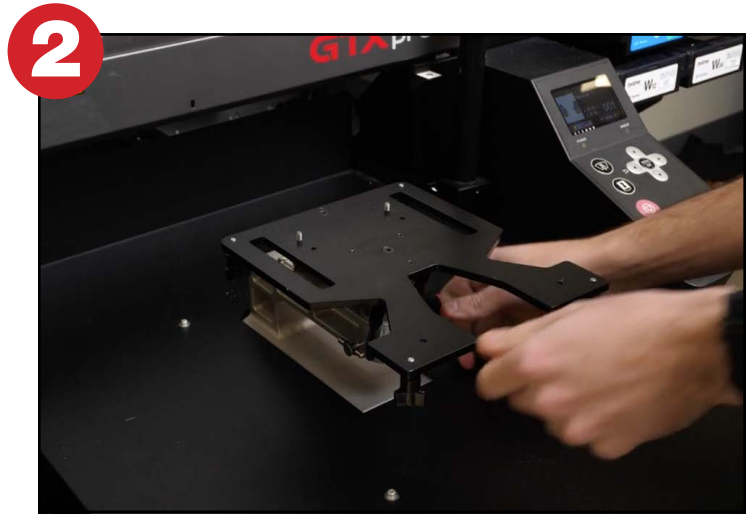
Instructions for Installing the T-Lock Shoulder Insert:

Below are instructions for installing the T-Lock Shoulder Insert on your T-Lock Platen Base.



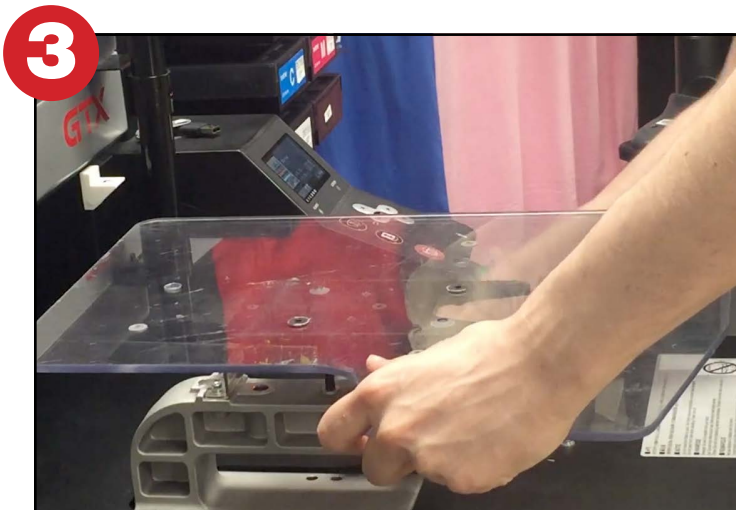
Step 1:

Insert the T-Lock Base into the platen stem of the Brother DTG printer.



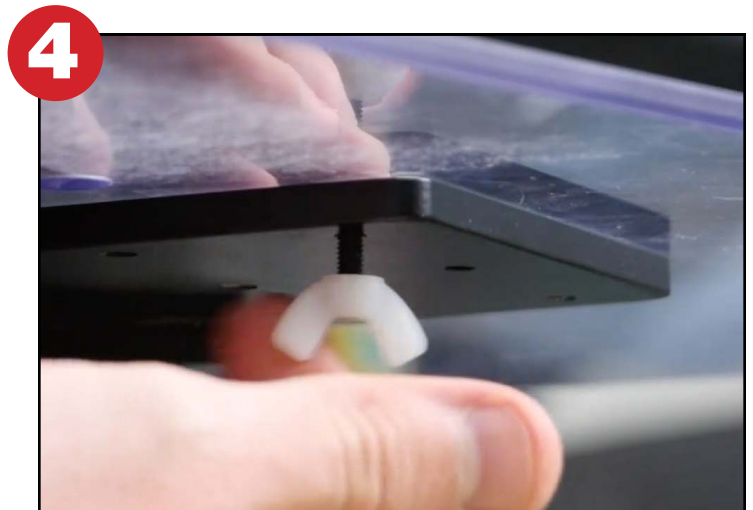
Step 2:

Adjust the height of the platen and tighten the locking lever.



Step 3:

Insert the T-Lock Shoulder Insert into the T-Lock Base. The insert is reversible, so ensure it's flipped to the correct side for what you want to print.



Step 4:

Secure the T-Lock Shoulder Insert using included bolts/wing nuts and pre-drilled holes on T-Lock Base.

Click or Scan Below to View the T-Lock Shoulder Print Video

Click or Scan Below to View the GTX T-Lock Assembly Video



Shoulder Platen Print Video

This video shows how to print on the T-Lock Shoulder Insert.



GTX T-Lock Assembly Video

Learn how to assemble the T-Lock base.