

# T-Lock Cap Kit Instructions

## Items Needed for Installing T-Lock Cap Kit:

### T-Lock Cap Kit - #TLOCKCAPK

T-Lock Cap Platen Kit - Includes 2 risers, a spacer, accessory kit and a T-Lock Base.

### Phillips Head Screw Driver

#2 Phillips Head Screw Driver

## Instructions for installing T-Lock Cap Kit:

Below are instructions for installing the T-Lock Cap Platen Kit.



### Step 1:

Hold the platen insert with counter sunk holes face up, place T-Lock bracket under two counter sunk holes and use two (2) of included screws to attach T-Lock side bracket. Attach the second side bracket and back bracket in the same manner.



### Step 2:

Install the T-Lock Cap Insert so that the T-Lock brackets slide into the slots in T-Lock Base.



### Step 3:

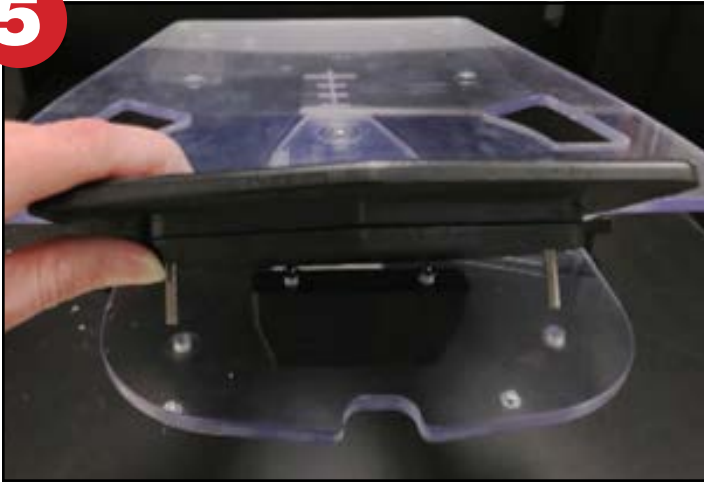
Secure the Platen Insert by rotating the center piece in the T-Lock brackets.



### Step 4:

If platen insert is not level, adjust the 4 platen leveling screws until the platen is level and secured.

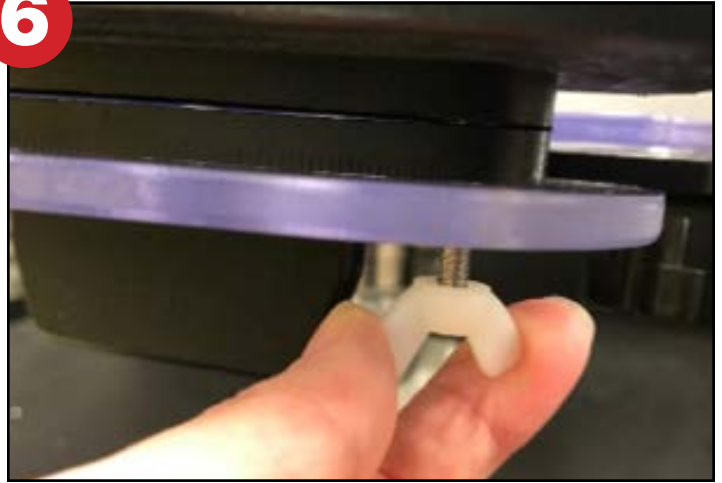
5



**Step 5:**

With the platen in place on the printer, set the spacer if needed and then the size insert you want through the matching holes in the platen.

6



**Step 6:**

From underneath take the 2 plastic wing nuts and screw them on to the brackets screws from underneath to secure the insert to the platen.

## Instructions for printing on the T-Lock Cap Platen:

Below are instructions for printing on the T-Lock Cap Platen.

1



**Step 1:**

Pretreat the hats with 15 to 20 grams of pretreat. To aid in an even print you can use a gloved hand or synthetic bristle paint brush to smooth out the pretreat on the cap. If printing CMYK only, this step is not needed.

2



**Step 2:**

Cure the pretreat at 300°F with a Heat Gun or Dryer. When using a heat gun, keep the heat gun in motion, moving it back and forth across the pretreated area.

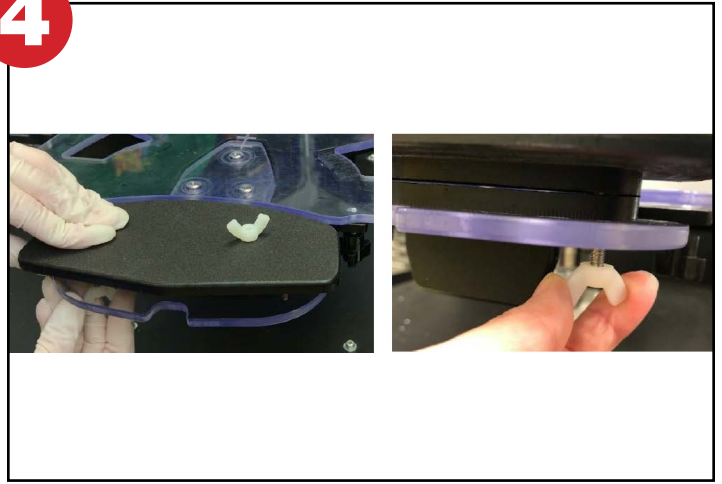
3



**Step 3:**

Select the riser that you need for the style cap you are printing on. The larger insert is designed for printing on unstructured caps where as the smaller insert with the groove carved in it is to be used for structured caps.

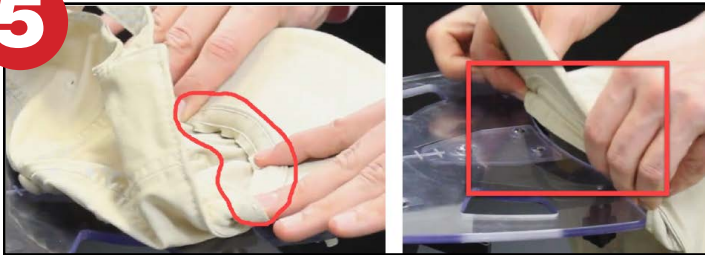
4



**Step 4:**

From underneath take the 2 plastic wing nuts and screw them on to the brackets screws from underneath to secure the insert to the platen.

5



**Step 5:**

Tuck the sweatband into the groove of the cap platen as shown below. Refer to Step 3 on Instructions for Printing on which Insert to use.

6a



**Step 6a:**

For Structured Caps: Gently flatten the bill of the cap down on the platen and using the provided binder clips, clip the bill to the platen. You may want to apply double-sided tape to the riser underneath the crown to help flatten the hat further. Then pinch the fabric on the sides of the cap and clamp the fabric down onto the bill (not the platen) to further flatten the fabric.

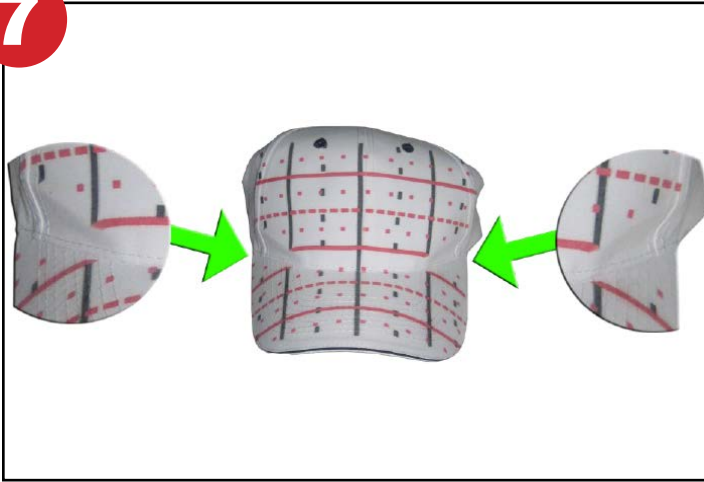
6b



**Step 6b:**

For Unstructured Caps: Gently flatten the bill of the cap down on the platen and using the provided binder clips clip the bill to the platen. Smooth the fabric of the cap down and using a large binder clip, clamp the center back of the cap to the platen. Pinch the fabric on the edge of the cap and fold it over and clamp the fabric to the lower section of the platen as shown in the photos below.

7



**Step 7:**

The Photoshop® template comes with a Cap Print Grid. If you print the Cap Print Grid on the cap you are using with the riser / spacer combination will help you determine where the artwork should be placed to show up in the graphic software program to print in the proper location on the cap. The Cap Print Grid also allows users to determine if printing on a specific location on the bill will be crisp enough if using a spacer. Below is a picture of the Cap Print Grid on a cap. Notice that on the sides of the caps there are areas where artwork cannot be printed.

8



**Step 8:**

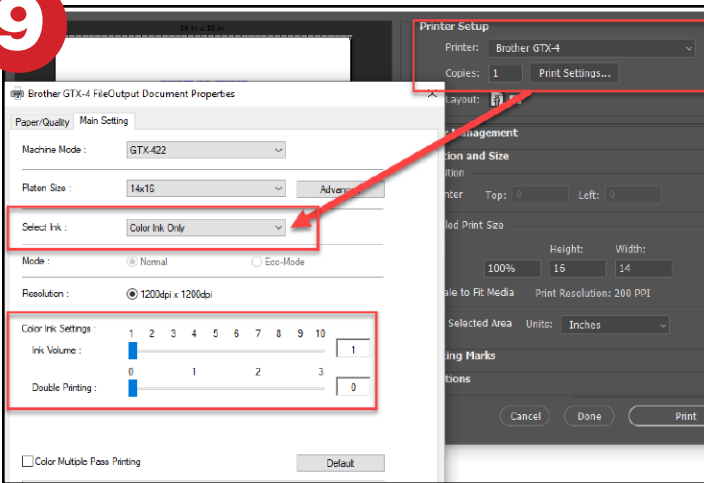
The GT Cap Platen template was designed so that the front of the riser being used would start 5 inches from the center of a 14" x 16" template (standard Adult Platen size) and the top of the Large Riser is at the top of the 14" x 16" template. By placing your artwork at the top center of a 14" x 16" platen will help with the placement of the artwork.

The standard visible area of cap when being worn is approximately 3" in height. So, the Large Riser provides approximately 3 inches of printable area. However, some low-profile caps may require the printable area to be smaller. In addition, the size of the bill on caps can vary as well. The artwork template provides a good starting point, but some adjustments may need to be made based on the cap being used.

Open the Cap Platen template in Photoshop or your chosen graphics software and center it within a 14"x16" area. Then import your artwork onto a layer below the template to help you visualize where your artwork will fall on the cap.

It is suggested to do a test print before you do your final print on the cap. Click on the eye in the Layers panel to hide the template layer.

9



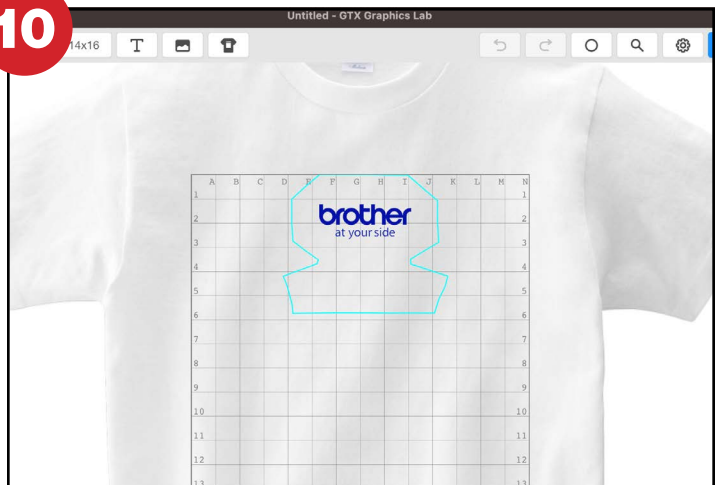
**Step 9:**

Within your graphics software go to File>Print and choose the GTX printer. Under Print Settings select Color Ink Only and set the Ink Volume to 1 and Double Printing to 0. Press OK and the Print to send the file to the printer.

Now that the test file has been sent to the printer, lower the platen 2 steps down. For example, if the cap cleared the sensor at platen level "D" then lower the platen to level "F". You will then want to set a sheet of acetate on top of the caps printable area and print your test file.

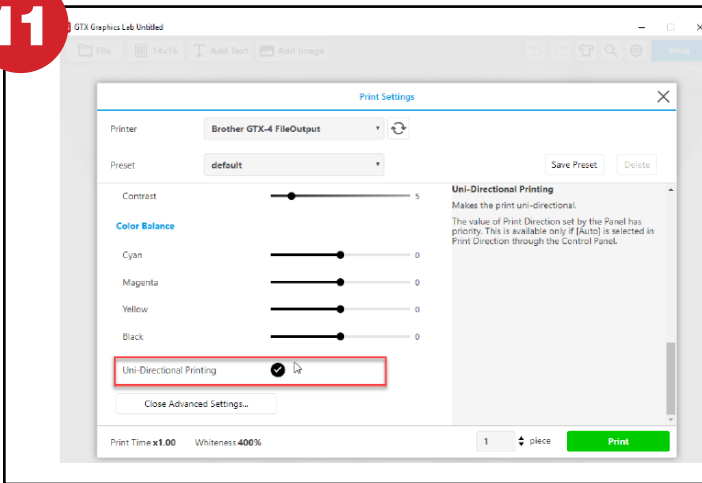
If the artwork did not cover the area of the shoe that you want, then you will need to adjust the placement within your graphics software and preform another test print. Once the artwork is placed where you need it, then save your artwork as a PNG file format. As an example, in Photoshop you will go to File>Save As and set your Save As Type to PNG. Save the file in a location of your choosing.

10



**Step 10:**

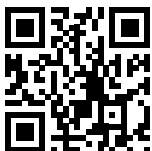
Open your PNG in the Graphics Lab software that was installed with the GTX Driver. Click on the Add Image button to import the file. Because we designed the image on a 14x16 inch area the file will drop into place and print exactly where our test file print was. Click on the Print button in the upper right-hand corner of the Graphics Lab software.

**11****Step 11:**

When printing with white ink with GTX we suggest a highlight of 3 or 4 highlight to start out and a mask of 2 for a cotton cap. It is also suggested that you turn on the Uni-Directional Printing option. This option will help maintain a sharp crisp print on the cap if you were unable to get the printable area completely flat or if you are printing over seams and eyelets.

**Click or Scan Below to View the T-Lock Cap Platen Printing Video**

**Click or Scan Below to View the Printing on Substrates: Printing on Caps Guide**

**Video****Guide****T-Lock Cap Platen Printing Video**

Learn the steps to printing a cap on the Brother GTXpro direct to garment printer.

**Printing on Caps Guide**

This guide will show you in greater detail how to setup the cap platen and print on caps effectively. Also Includes how to use the Acculine system to print caps.