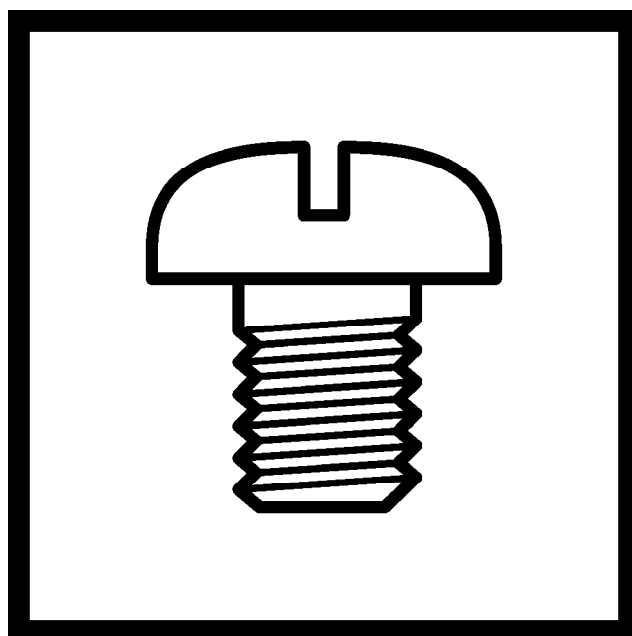


DTRX001

パーツブック
PARTS BOOK

パウダーシェイカー
POWDER SHAKER



brother

The latest parts information, refer to the Parts Navigation. <http://partsbook.brother.co.jp/partsnavi/eng/>

パーツブックご利用に際して

1. この本は、2026年3月のデータに基づいて作成されたものです。
2. 部品は予告なしに設計変更される場合があります。
3. 組単位で補給する部品は、破線で示してあります。
4. イラスト中で数字(REF.NO)に“+”がついている部品は、機種または仕様により異なります。詳細は、リストを参照してください。

目 次

A. 下側ヒーター部品	1
B. 上側ヒーター部品	3
C. 排気フィルター	5
D. モーター 42	7
E. パウダーはたき機構	9
F. メディア巻取り検知機構	11
G. 駆動ギア	13
H. 排気管冷却ファン	15
I. パウダー循環機構	17
J. パウダーセンサー用ポテンシオメーター	19
K. プレヒーター	21
L. タッチスクリーン	23
M. スイッチ	25
N. メディア冷却ファン	27
O. パウダーボックス	29
P. 排気ブロワー	31
Q. 吸着ファン	33
R. 電気部品	35
索引	37

Notes for using this parts book

1. This book was prepared based on information available in March 2026.
2. Parts are subject to changes in design without prior notice.
3. Parts supplied as complete assemblies are circled by a dotted line.
4. The part which has the symbol "+" on its number (REF.NO) in the figure differs depending on the machine model or specification. For details, refer to the parts list.

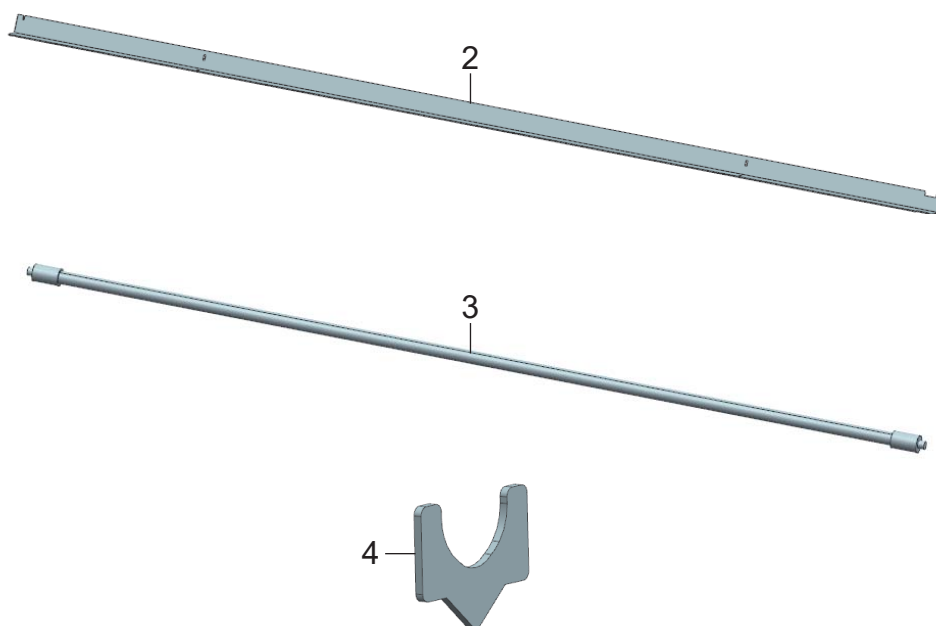
CONTENTS

A. Bottom Heater Element	1
B. Top Heater Element	3
C. Exhaust Filter	5
D. Motor 42	7
E. Shaker Mechanism	9
F. Media Winding Detection Mechanism	11
G. Drive Gear	13
H. Exhaust Pipe Cooling Fan	15
I. Powder Circulation Mechanism	17
J. Potentiometer for Powder Sensor	19
K. Preheater	21
L. Touch Screen	23
M. Switch	25
N. Media Cooling Fan	27
O. Powder Box	29
P. Exhaust Blower	31
Q. Vacuum Fan	33
R. Electrical Components	35
Index	37

A. 下側ヒータ一部品 / Bottom Heater Element



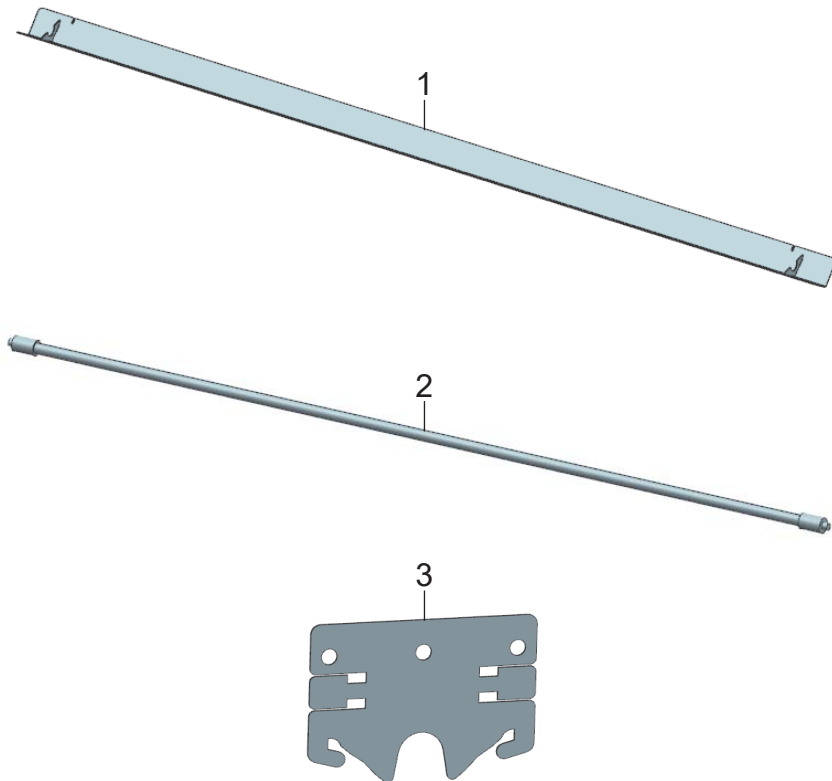
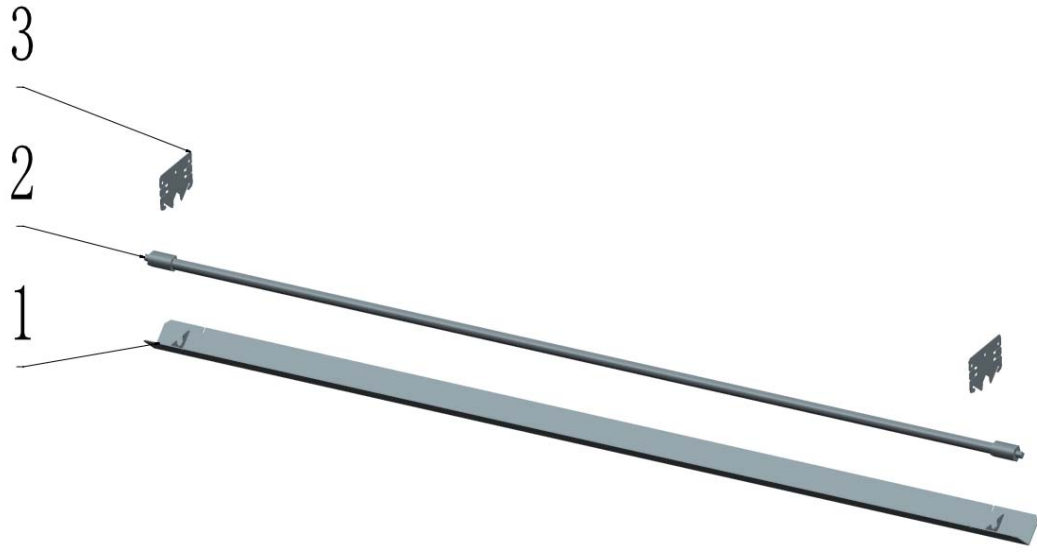
※No. 1は補給部品ではありません。
No.1 is not a supply part.



A. 下側ヒータ一部品 / Bottom Heater Element

REF.NO	CODE	Q'TY	NAME OF PARTS (品名)
2	D03MK1001	1	H ELEMENT STAND G301010207
3	D03MKH001	1	HEATING ELEMENT 850 G301060140
4	D03MK2001	2	BACKLIT T BRACKET 1 G301060015

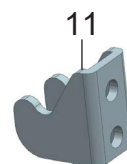
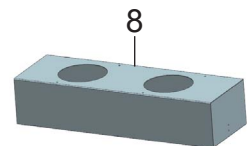
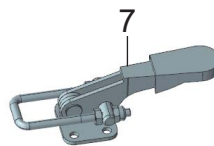
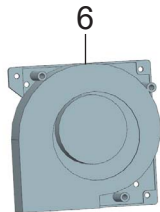
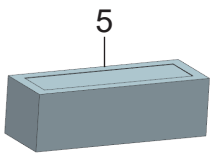
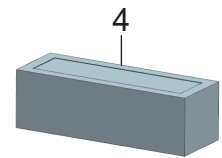
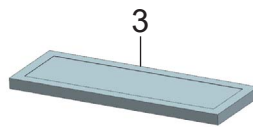
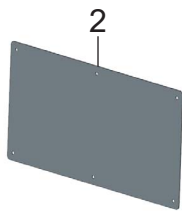
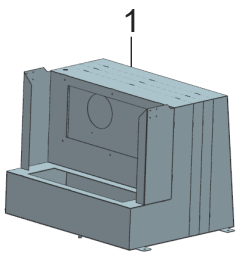
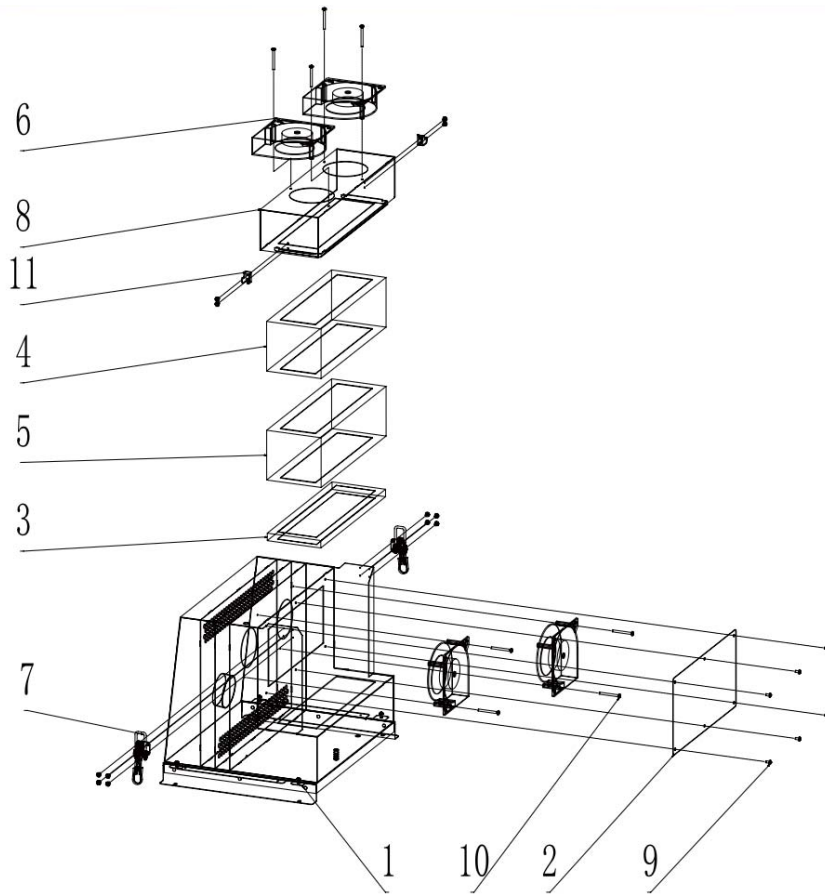
B. 上側ヒータ一部品 / Top Heater Element



B. 上側ヒータ一部品 / Top Heater Element

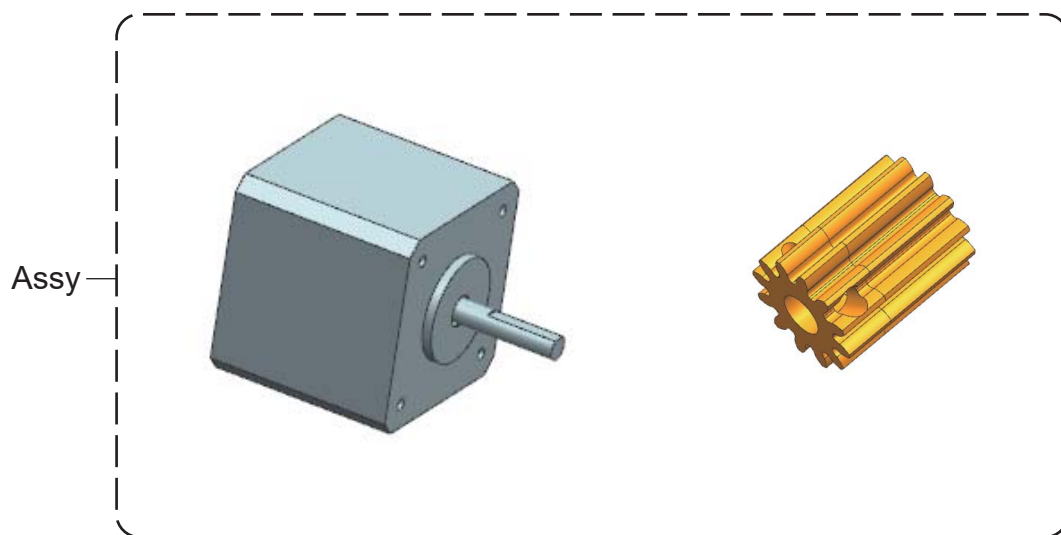
REF.NO	CODE	Q'TY	NAME OF PARTS (品名)
1	D03MK3001	1	H ELEMENT FIXTURE G301103399
2	D03LZ7001	1	HEATING ELEMENT 930 G301060170
3	D03MK4001	2	TOP H ELEMENT CLIP G301103399

C. 排気フィルター / Exhaust Filter



C. 排気フィルター / Exhaust Filter

REF.NO	CODE	Q'TY	NAME OF PARTS (品名)
1	D03MKK001	1	OIL REMOVAL BOX G301060295
2	D03MKL001	1	FAN COVER G301101631
3	D03MJZ001	1	PRE-FILTER G400000045
4	D03LZD001	1	AIR FILTER G300000003
5	D03LZC001	1	CARBON FILTER G300000002
6	D03LZ5001	4	TURBO FAN 120 G304630057
7	D03MKM001	2	BUCKLE LOCK 1 G303000628
8	D03MKN001	2	INTAKE HOOD G301101632
9	D03MKP001	16	201 P SCREW M4X8 G307300023
10	D03MKR001	8	304 P SCREW M4X40 G307300024
11	D03MKS001	2	BUCKLE LOCK 2 G303000628

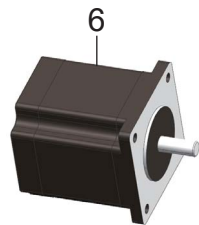
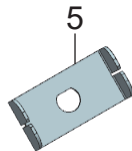
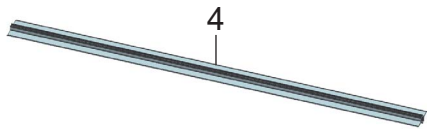
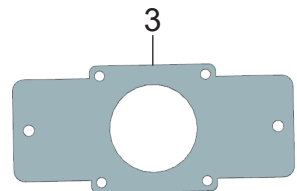
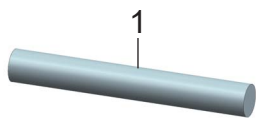
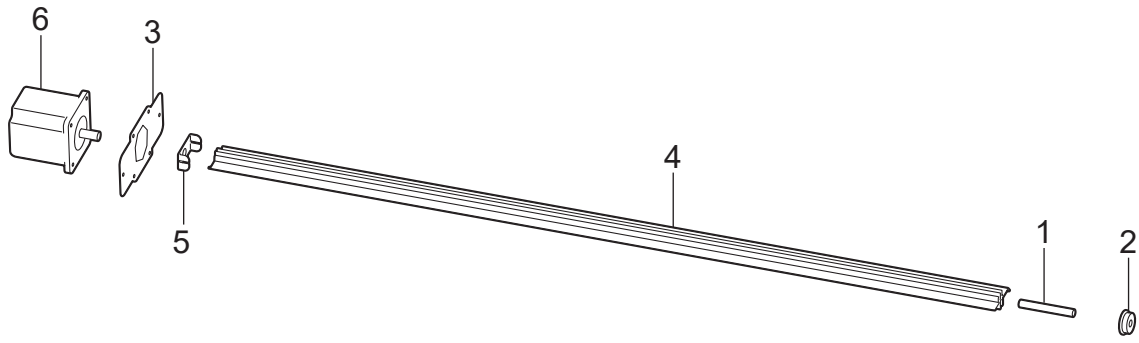


※Assy : ステッピングモーターとギアの組部品
Assy : Complete assemblies of stepping motor and gear

D. モーター 42 / Motor 42

REF.NO	CODE	Q'TY	NAME OF PARTS(品名)
Assy	D03MKT001	1	MOTOR 42 ASSY G123456789

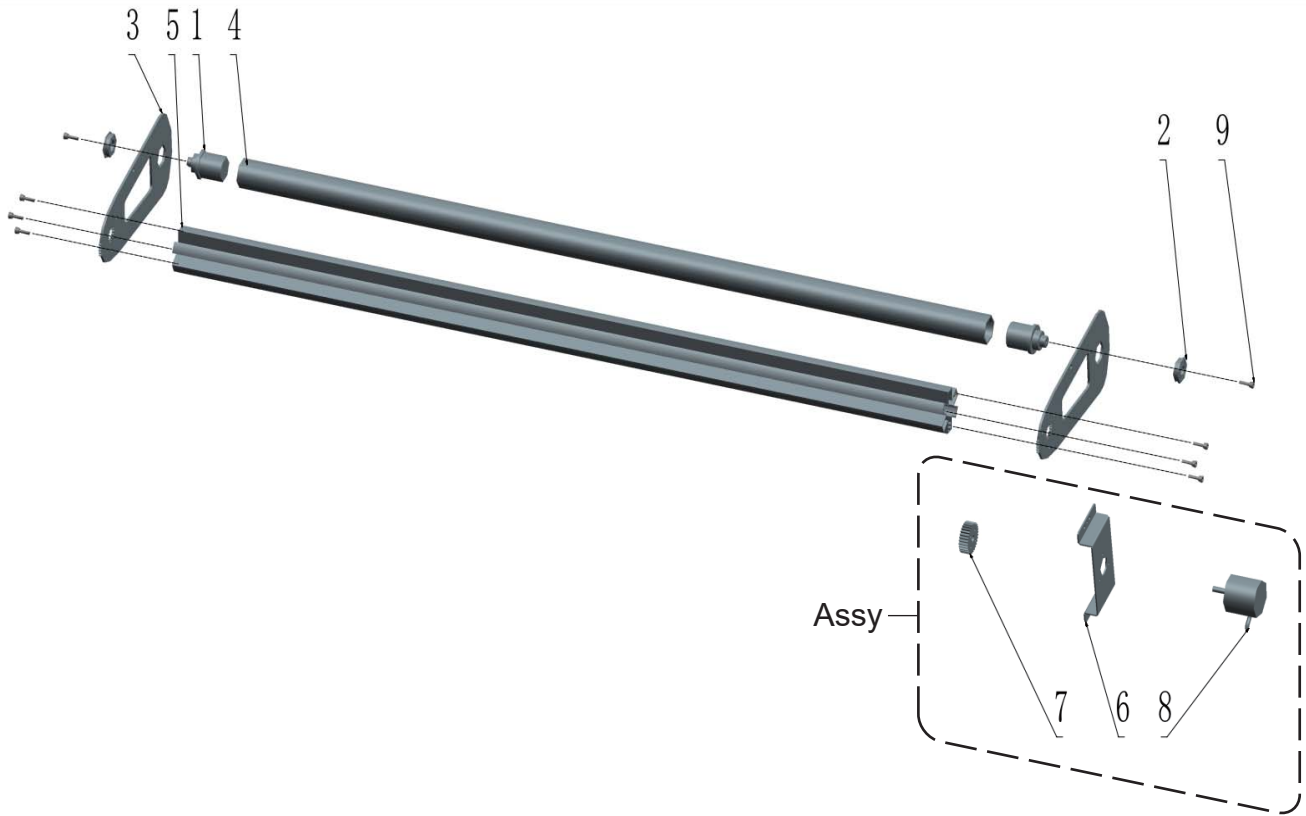
E. パウダーはたき機構 / Shaker Mechanism



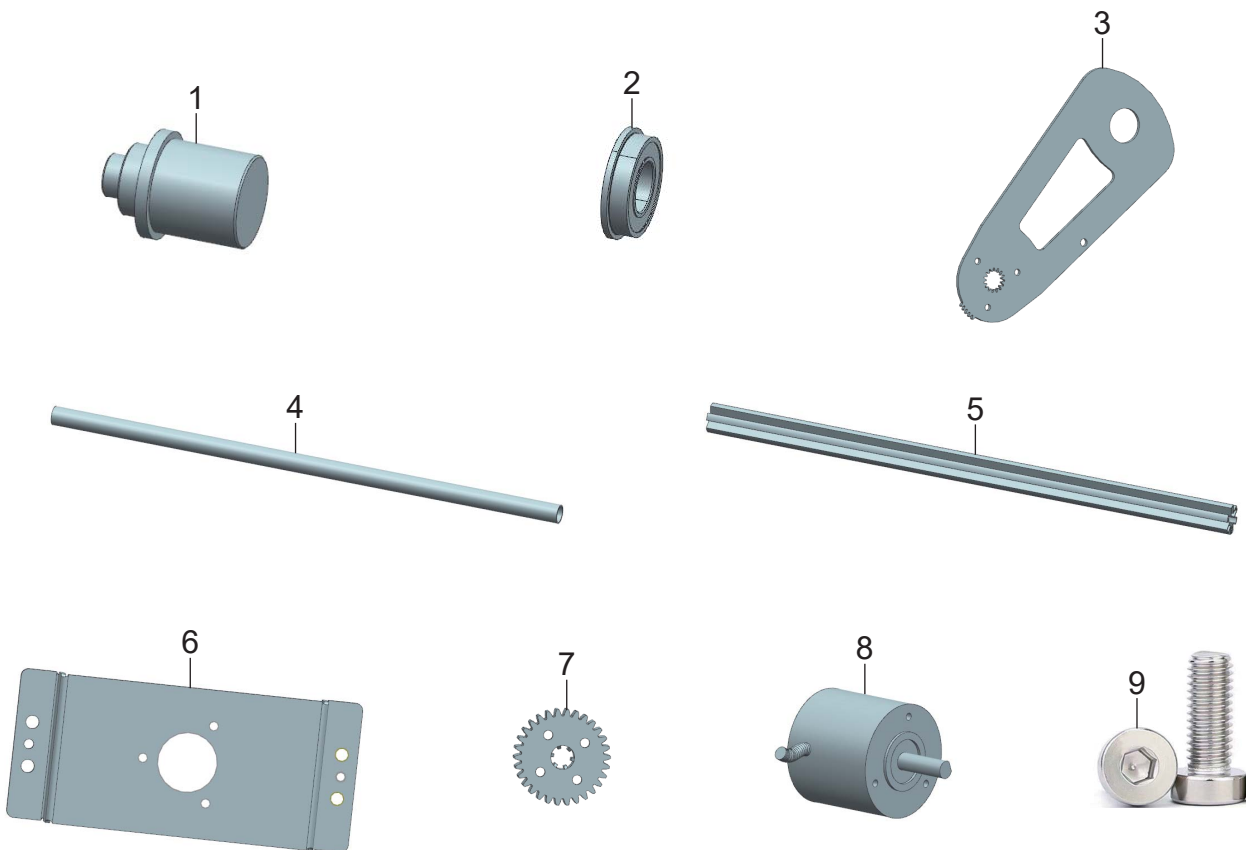
E. パウダーはたき機構 / Shaker Mechanism

REF.NO	CODE	Q'TY	NAME OF PARTS (品名)
1	D03MKV001	1	SHAKER PLATE PIN G303000043
2	D03MKW001	1	FLANGE M BEARING G303030022
3	D03MKX001	1	MOTOR FIX PLATE G301102771
4	D03MKY001	1	SHAKER PLATE G301060192
5	D03MKZ001	1	SHAKE MOTOR CLAMP G301101681
6	D03LZF001	1	STEPPING MOTOR 56 G304590085
7	D03ML0001	3	P PAN HEAD M4X6 G307300025
8	D03ML1001	4	HEX S HEAD M4X16 G307300013
9	D03MKP001	2	201 P SCREW M4X8 G307300023

F. メディア巻取り検知機構 / Media Winding Detection Mechanism



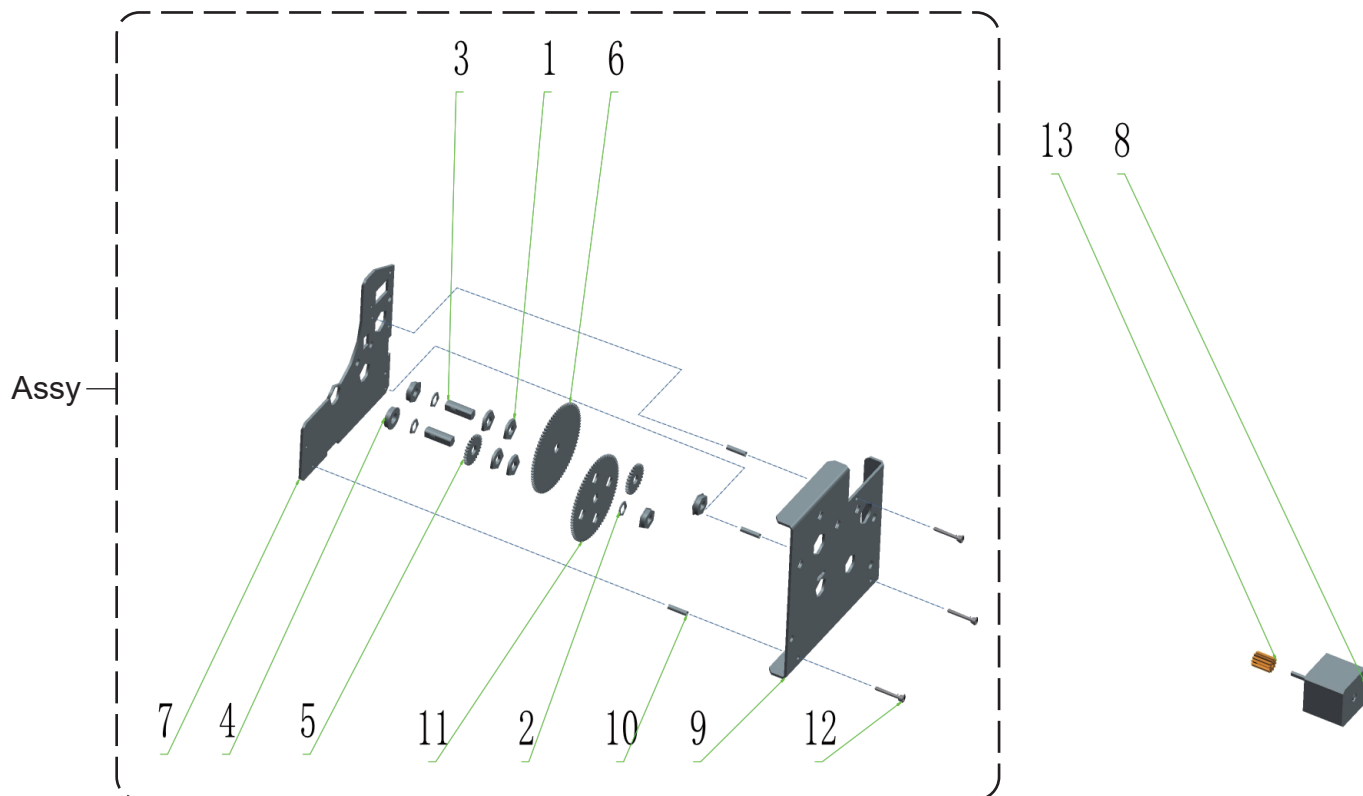
※Assy : No. 6、7、8の組部品
 Assy : Complete assemblies of No.6 to 8



F. メディア巻取り検知機構 / Media Winding Detection Mechanism

REF.NO	CODE	Q'TY	NAME OF PARTS(品名)
1	D03ML2001	2	SHAFT PLUG G301010194
2	D03ML3001	2	FLANGE BEARING G303030003
3	D03ML4001	2	FILM TU SWING ARM G301050043
4	D03ML5001	1	FILM TU SWING SHAFT G301050185
5	D03ML6001	1	FILM TU CENTER TUBE G301060109
Assy	D03ML7001	1	POTENTIOMETER ASSY1 G123456789
9	D03MLB001	8	304 P SCREW M4X12 G307300008

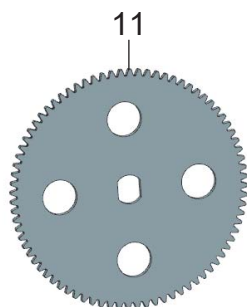
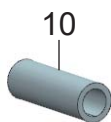
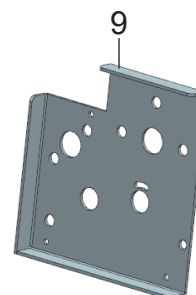
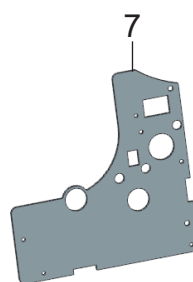
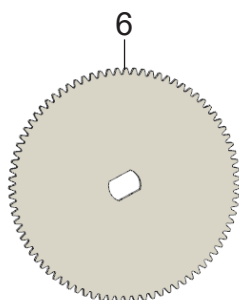
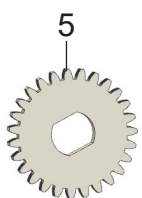
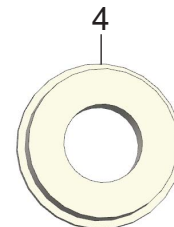
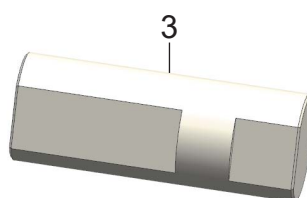
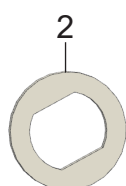
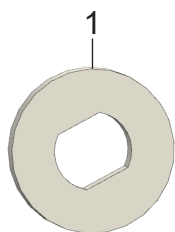
G. 駆動ギア / Drive Gear



※Assy : No. 1~7、9~12の組部品

Assy : Complete assemblies of No.1 to 7 and 9 to 12

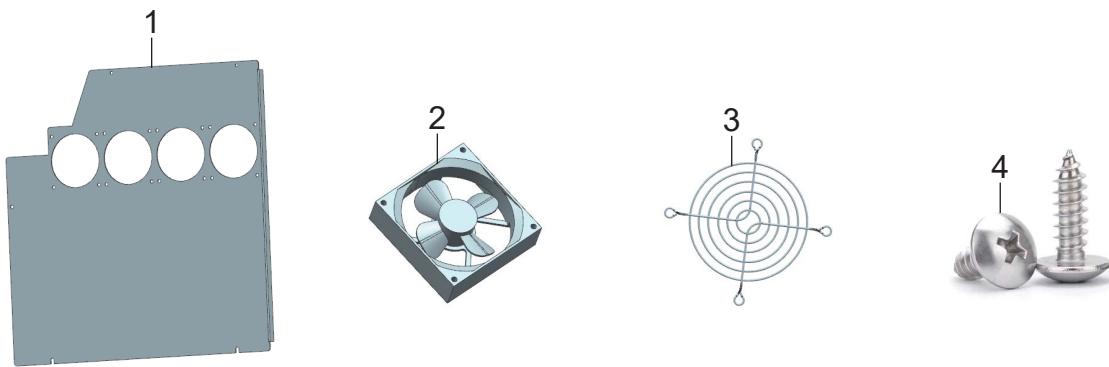
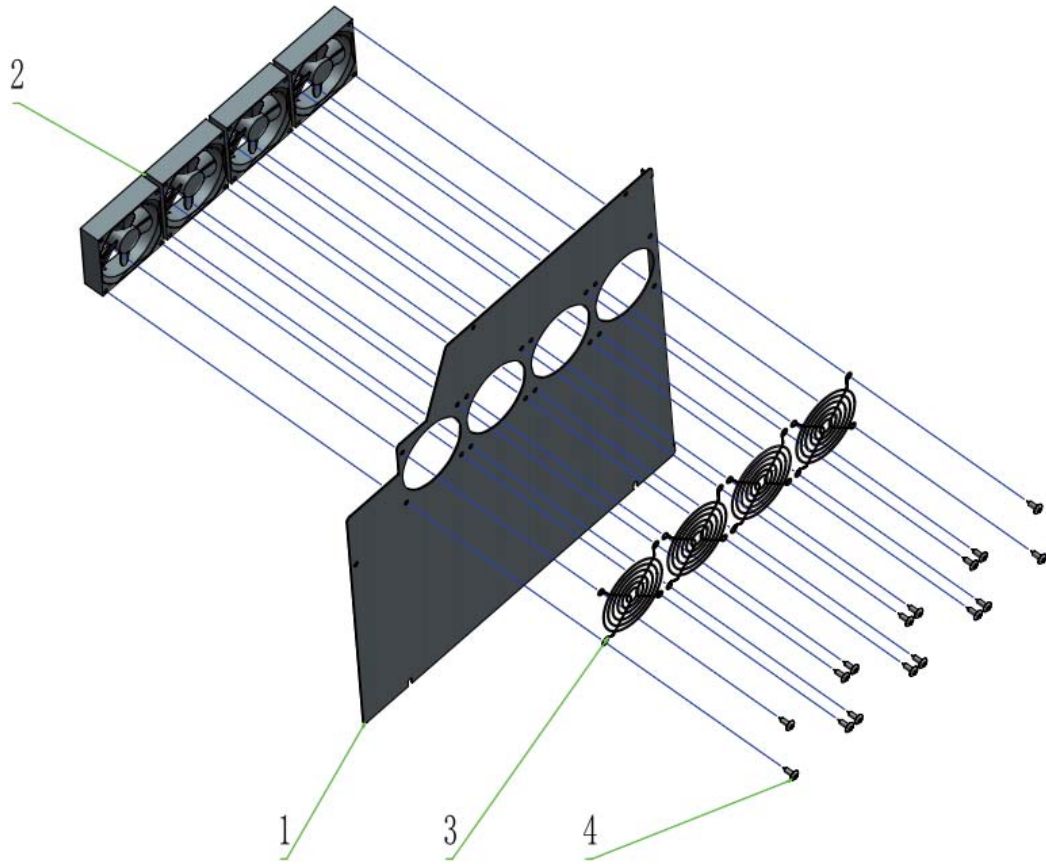
※No. 8、13は「D03MKT001 MOTOR 42 ASSY G123456789」として、Page. 8に記載しています。
No.8 and 13 are listed on Page.8 as "D03MKT001 MOTOR 42 ASSY G123456789"



G. 駆動ギア / Drive Gear

REF.NO	CODE	Q'TY	NAME OF PARTS(品名)
Assy	D03MLC001	1	D GEAR SUPPLY ASSY G123456789

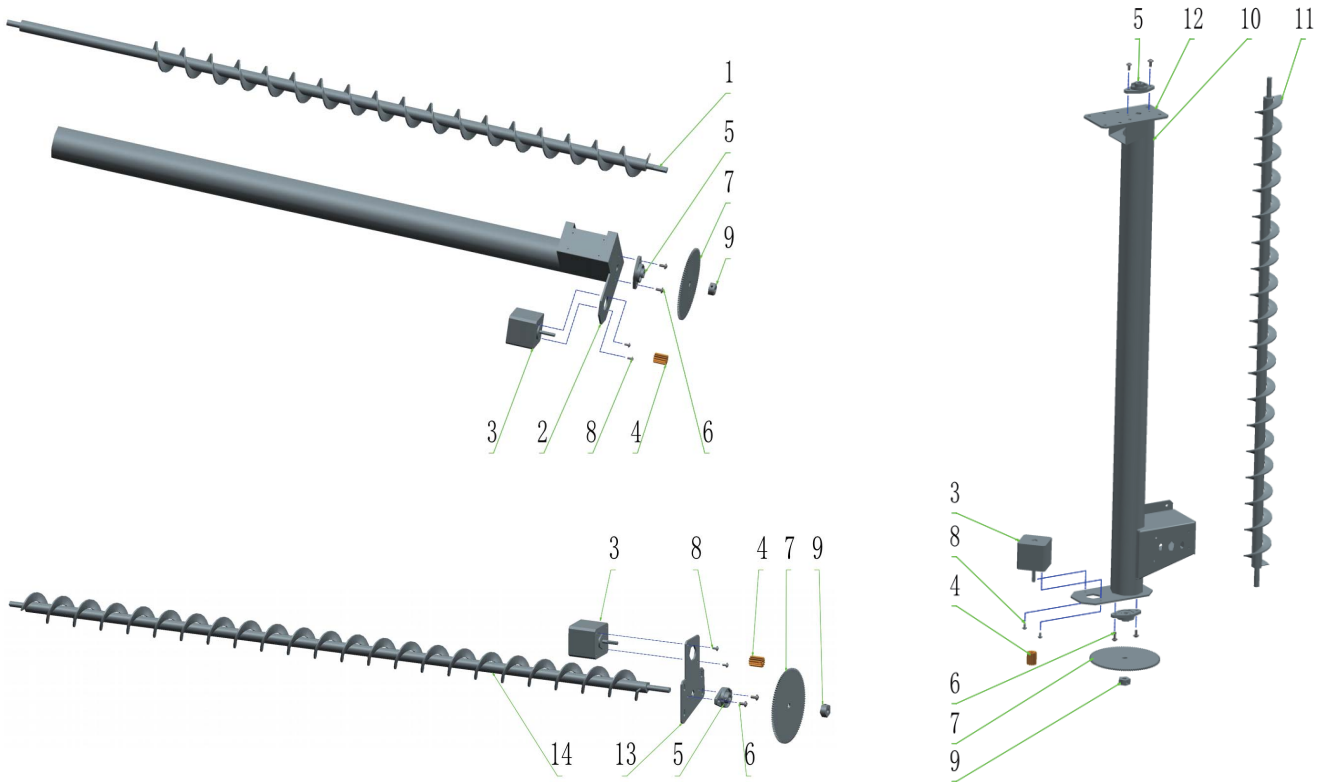
H. 排気管冷却ファン / Exhaust Pipe Cooling Fan



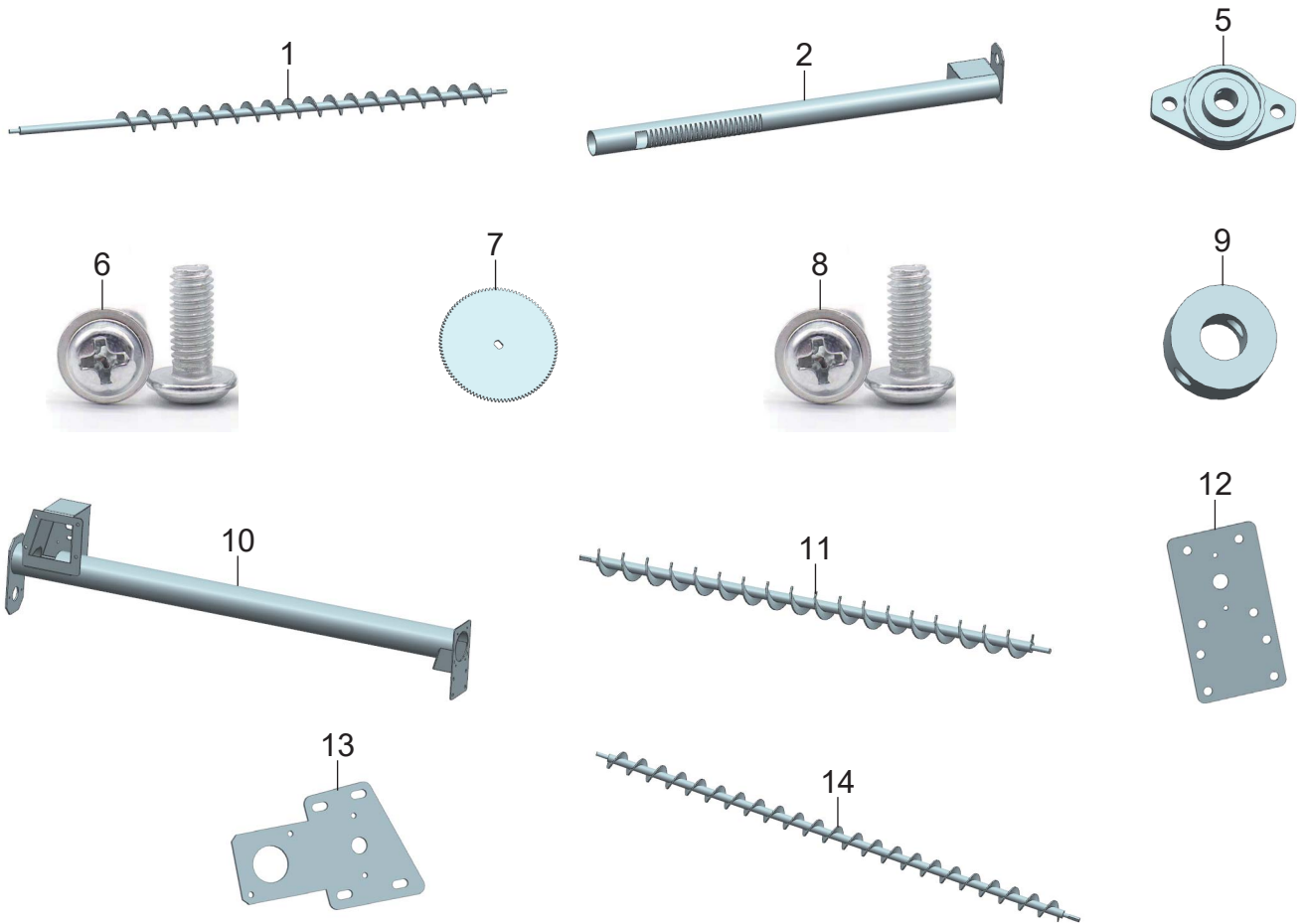
H. 排気管冷却ファン / Exhaust Pipe Cooling Fan

REF.NO	CODE	Q'TY	NAME OF PARTS (品名)
1	D03MLR001	1	FAN MOUNTING PLATE G301102769
2	D03MJX001	4	FAN 92 G304580261
3	D03MLS001	4	FAN GRILLE G303000041
4	D03MLT001	12	FH TAP SCREW M5X16 G307300229

I. パウダー循環機構 / Powder Circulation Mechanism



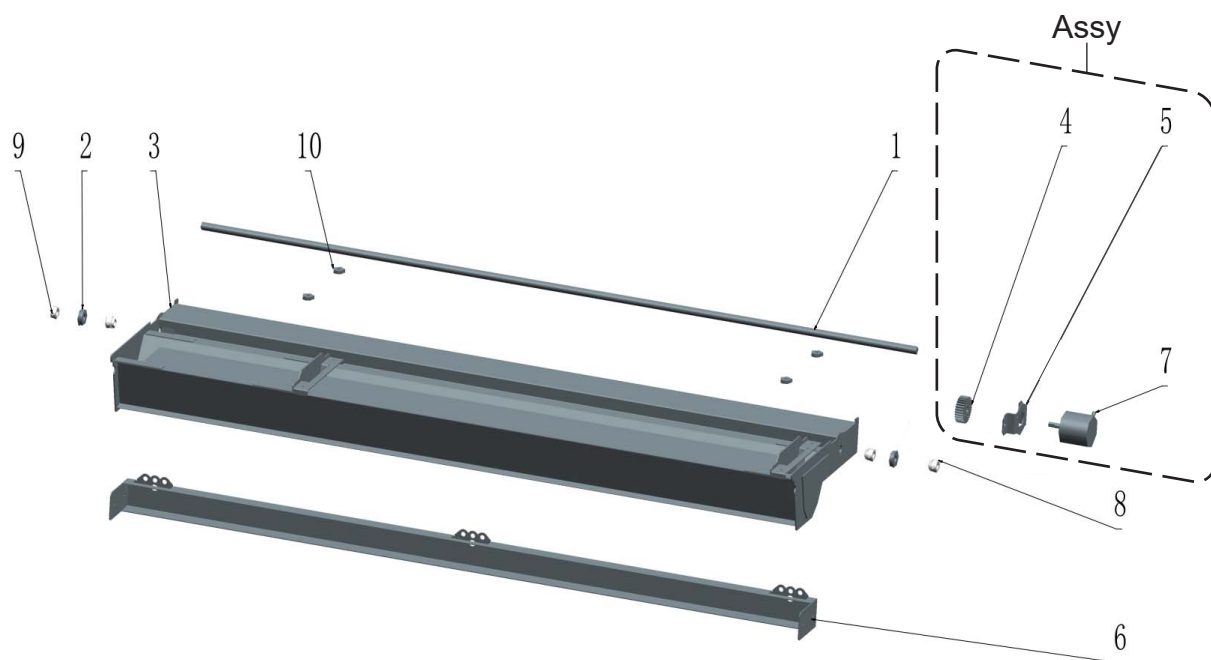
※No. 3、4は「D03MKT001 MOTOR 42 ASSY G123456789」として、Page. 8に記載しています。
 No.3 and 4 are listed on Page.8 as "D03MKT001 MOTOR 42 ASSY G123456789"



I. パウダー循環機構 / Powder Circulation Mechanism

REF.NO	CODE	Q'TY	NAME OF PARTS (品名)
1	D03MLU001	1	UPPER POWDER SHAFT G301060307
2	D03MLV001	1	UPPER POWDER TUBE G301102782
5	D03MLW001	4	BEARING G303030049
6	D03MKP001	24	201 P SCREW M4X8 G307300023
7	D03MLX001	3	RECIRCULATING GEAR G301102786
8	D03MLY001	6	304 P SCREW M3X6 G307300152
9	D03MLZ001	3	SHAFT RETAIN RING G303000698
10	D03MM0001	1	V POWDER TUBE G301102783
11	D03MM1001	1	V POWDER SHAFT G301060308
12	D03MM2001	1	PR PIPE MOUNT PLATE G301102784
13	D03MM3001	1	LPM MOUNT PLATE G301102785
14	D03MM4001	1	LOWER POWDER SHAFT G301060309

J. パウダーセンサー用ポテンシヨメーター / Potentiometer for Powder Sensor

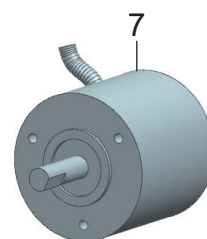
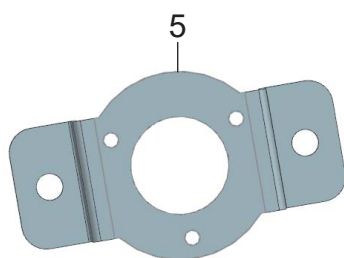
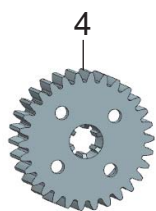


※Assy : No. 4、5、7の組部品

Assy : Complete assemblies of No.4, 5 and 7

※No. 1~3、6、8~10は補給部品ではありません。

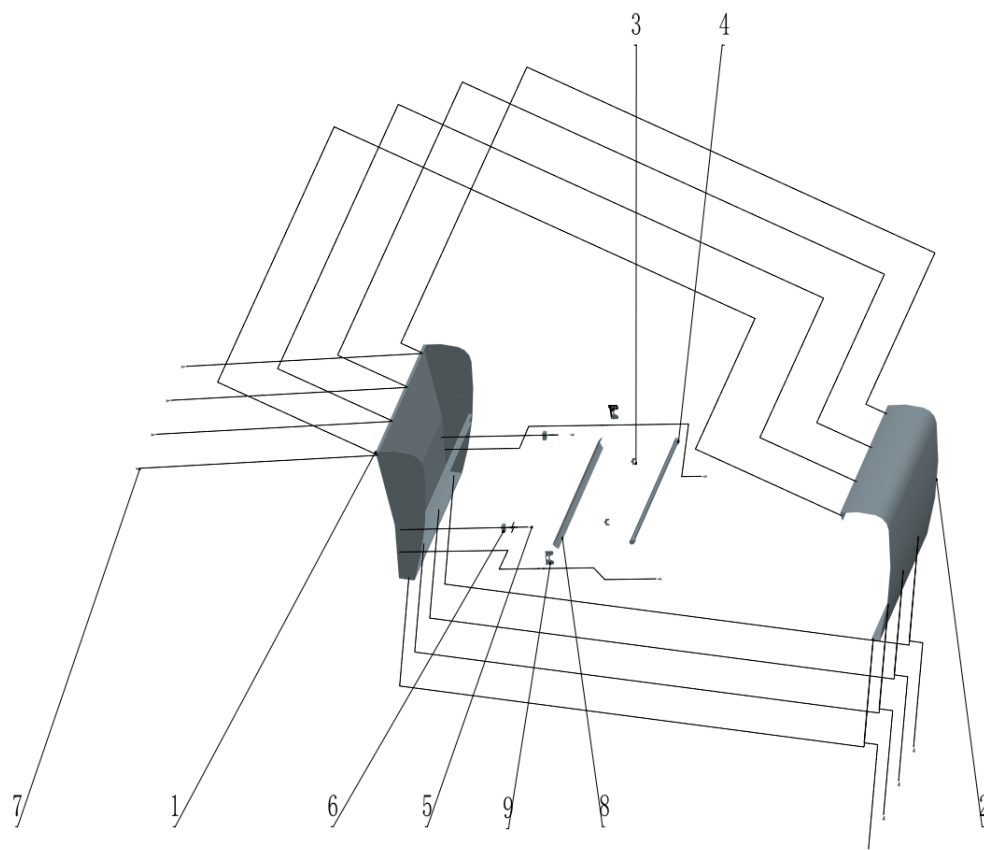
No.1 to 3, 6 and 8 to 10 are not supply parts.



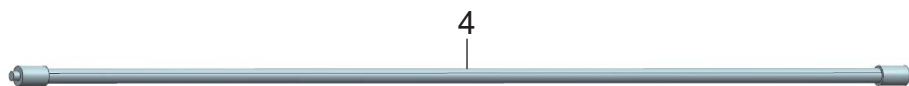
J. パウダーセンサー用ポテンシオメータ / Potentiometer for Powder Sensor

REF.NO	CODE	Q'TY	NAME OF PARTS(品名)
Assy	D03MM5001	1	POTENTIOMETER ASSY2 G123456789

K. プレヒーター / Preheater

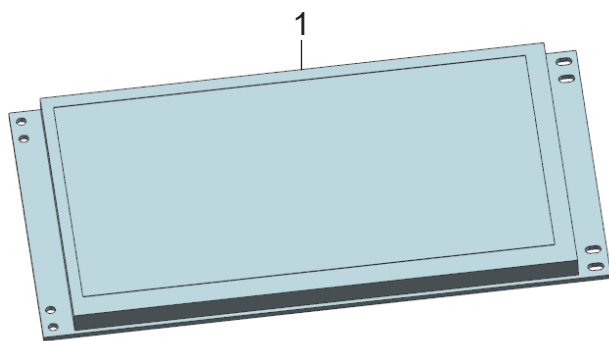


※No. 1、2、5、6、8、9は補給部品ではありません。
No.1, 2, 5, 6, 8 and 9 are not supply parts.



K. プレヒーター / Preheater

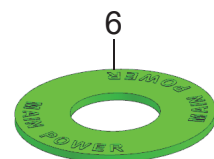
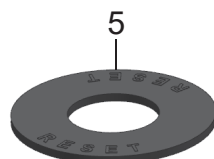
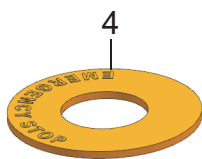
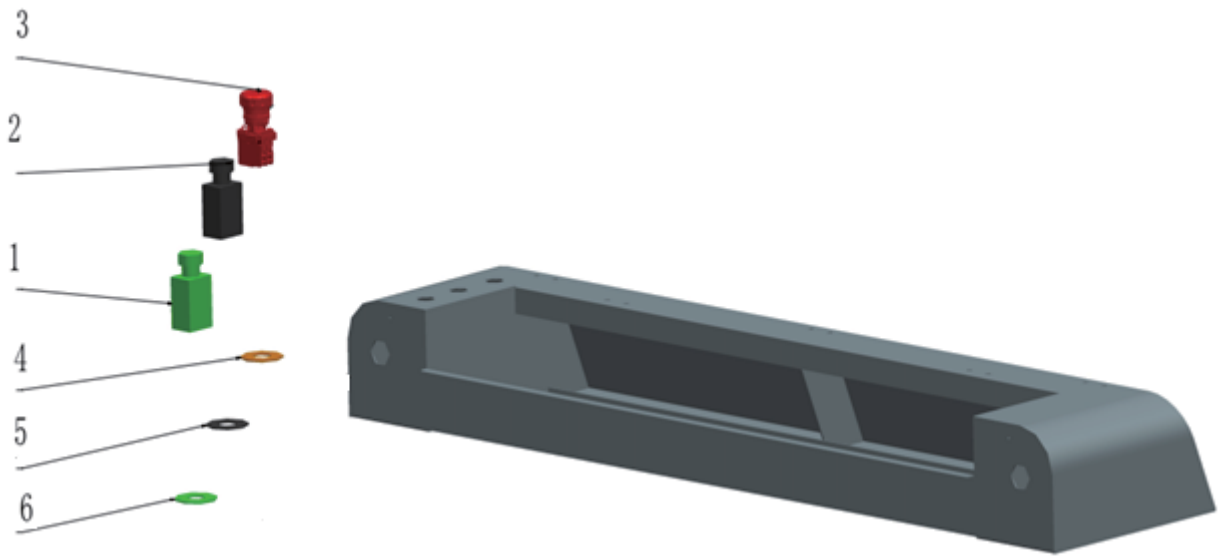
REF.NO	CODE	Q'TY	NAME OF PARTS (品名)
3	D03MM8001	2	H ELEMENT BRAKET G301050226
4	D03LZA001	1	HEATING ELEMENT 825 G301060133
7	D03MKP001	12	201 P SCREW M4X8 G307300023



L. タッチスクリーン / Touch Screen

REF.NO	CODE	Q'TY	NAME OF PARTS (品名)
1	D03LZG001	1	TOUCH SCREEN 7 G304510070

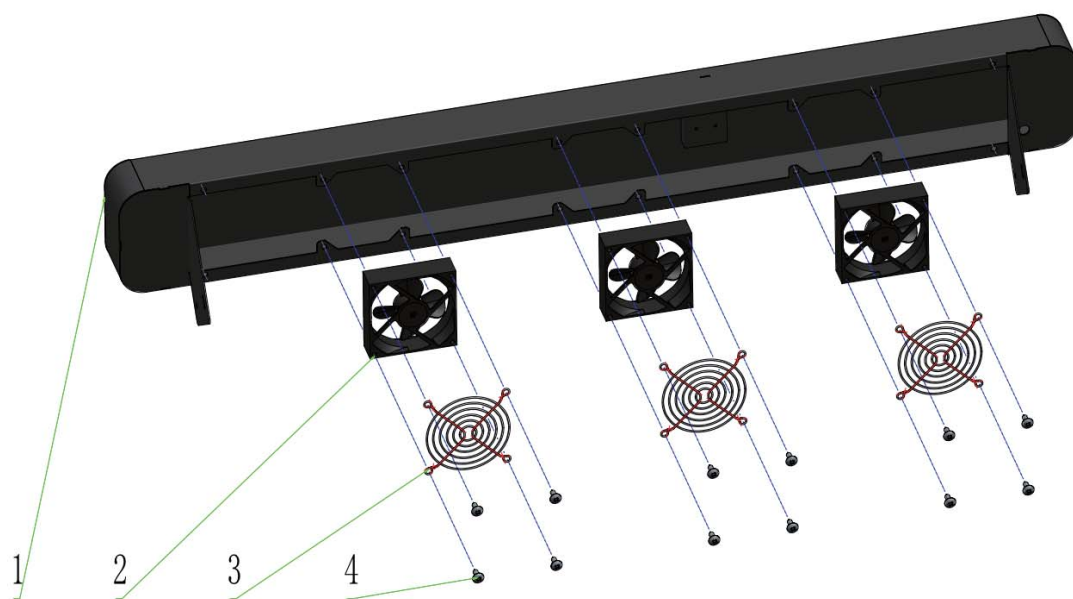
M. スイッチ / Switch



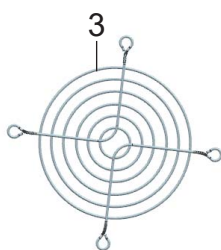
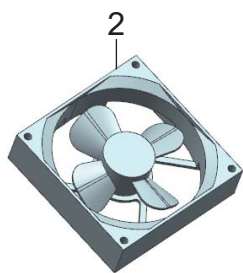
M. スイッチ / Switch

REF.NO	CODE	Q'TY	NAME OF PARTS (品名)
1	D03LZK001	1	MAIN POWER SWITCH G304520090
2	D03LZM001	1	RESET SWITCH G304520068
3	D03LZL001	2	EMERGENCY SWITCH G304520091
4	D03MM9001	2	EMERGENCY STOP LAB G123456789
5	D03MMA001	1	RESET LABEL G303000846
6	D03MMB001	1	MAIN POWER LABEL G303000847

N. メディア冷却ファン / Media Cooling Fan

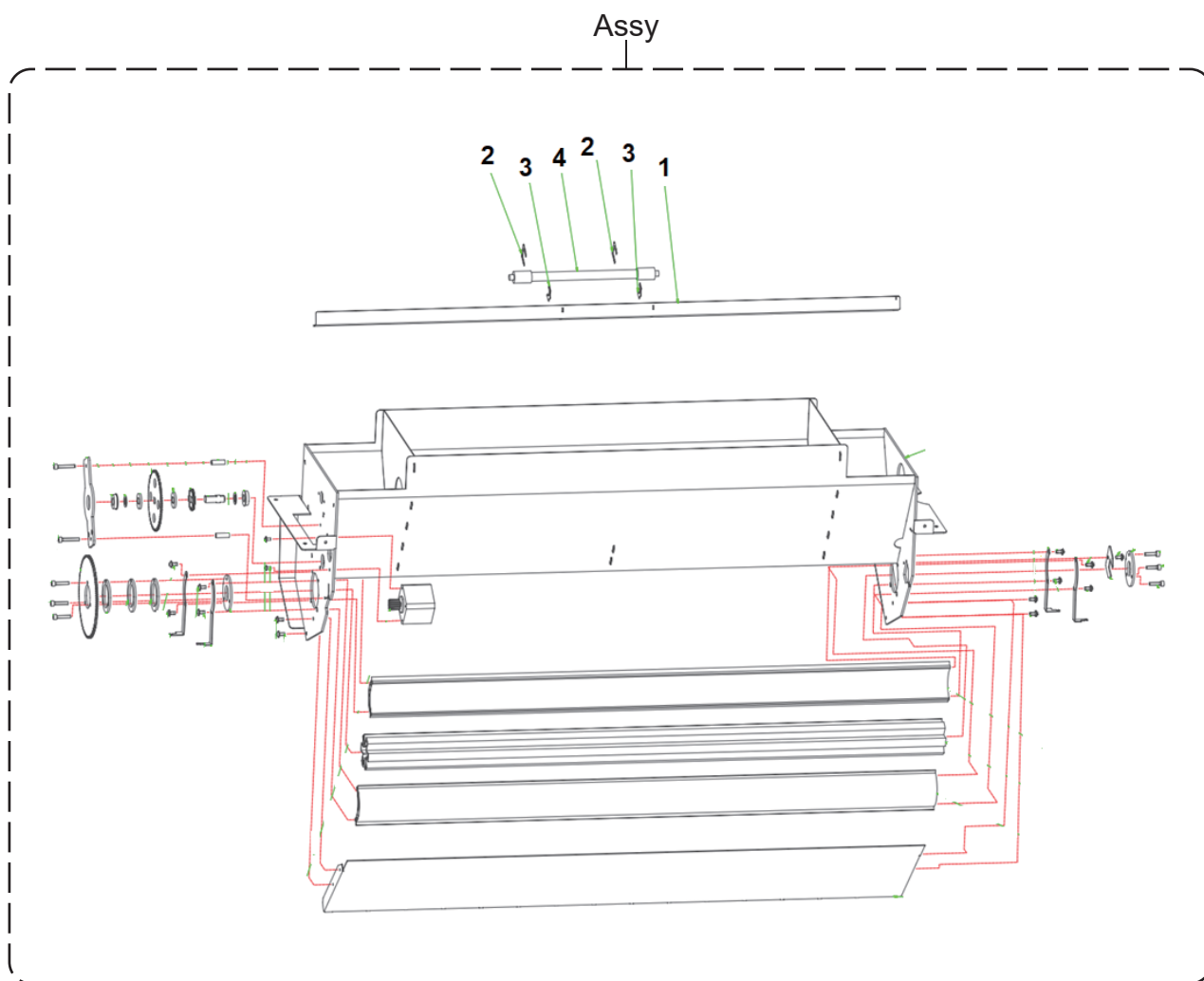


※No. 1は補給部品ではありません。
No.1 is not a supply part.



N. メディア冷却ファン / Media Cooling Fan

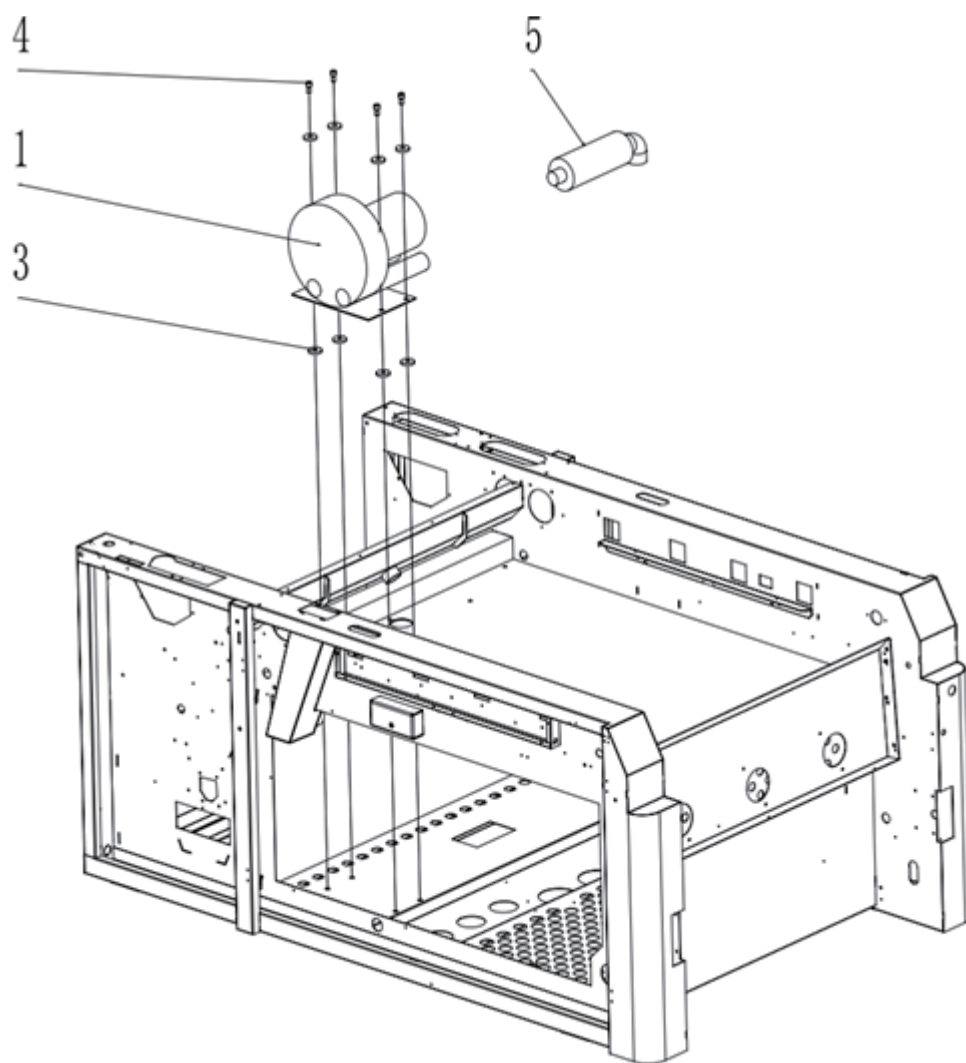
REF.NO	CODE	QTY	NAME OF PARTS (品名)
2	D03MJX001	3	FAN 92 G304580261
3	D03MLS001	3	FAN GRILLE G303000041
4	D03MLT001	12	FH TAP SCREW M5X16 G307300229



※Assy : No. 1~4を含む全体の組部品
Assy : Complete assemblies of all parts including No.1 to 4

○. パウダーボックス / Powder Box

REF.NO	CODE	Q'TY	NAME OF PARTS (品名)
Assy	D03MMC001	1	POWDER BOX ASSY G123456789
1	D03MME001	1	H ELEMENT STAND G301060219
2	D03MMF001	2	BACKLIT T BRACKET2 G301060016
3	D03MK2001	2	BACKLIT T BRACKET1 G301060015
4	D03LZB001	1	HEATING ELEMENT 200 G301060020

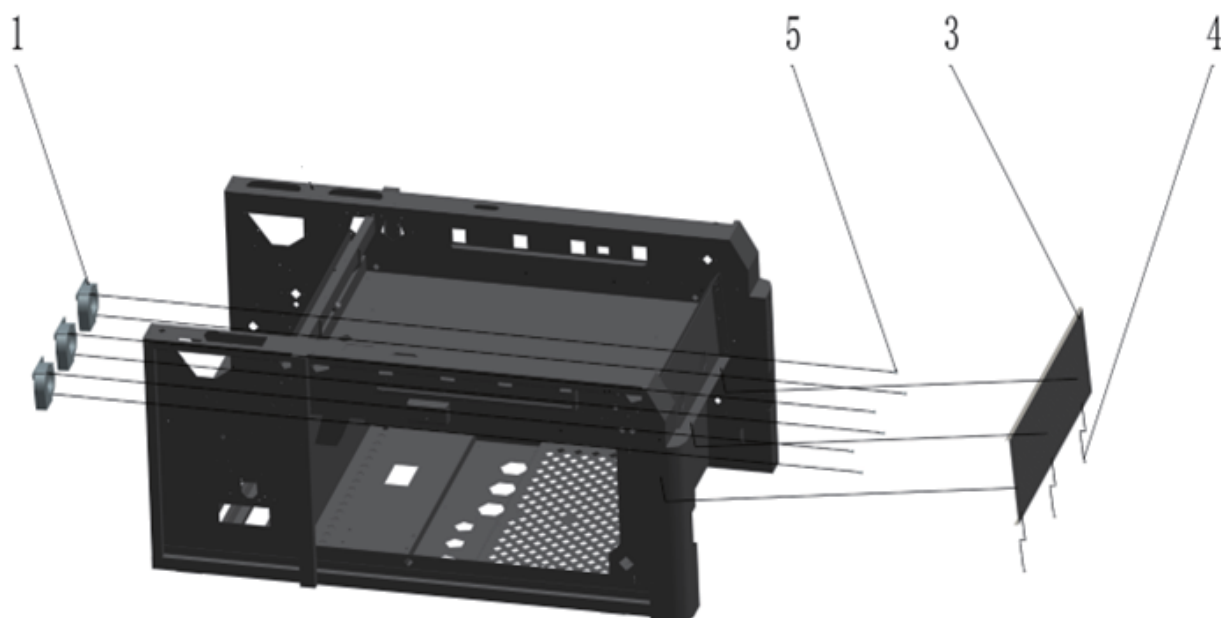


※No. 3~5は補給部品ではありません。
No.3 to 5 are not supply parts.

P. 排気ブロワー / Exhaust Blower

REF.NO	CODE	Q'TY	NAME OF PARTS (品名)
1	D03MJY001	1	BLOWER 245 G304630226

Q. 吸着ファン / Vacuum Fan

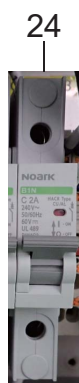
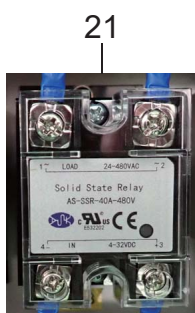
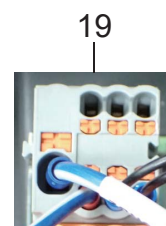
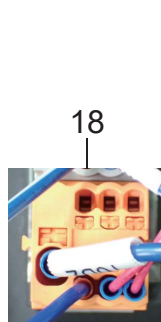
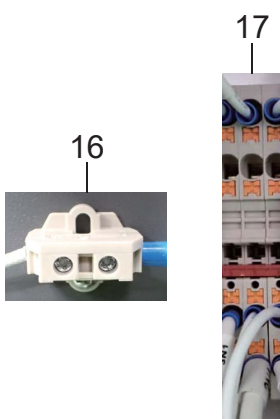
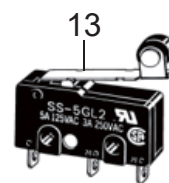
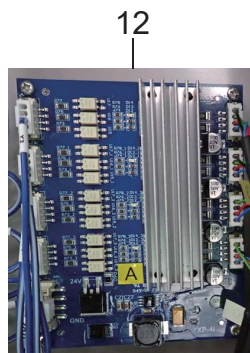
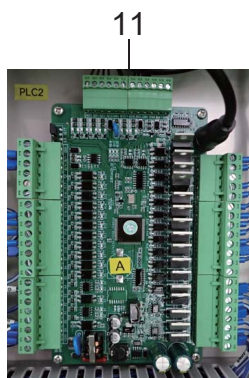
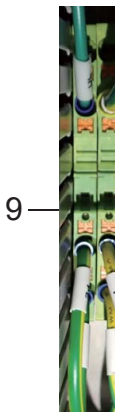
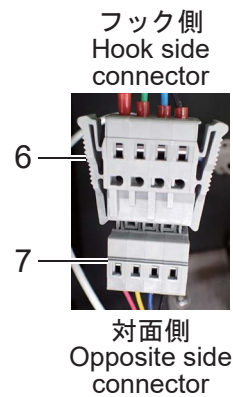
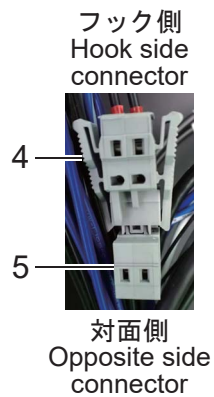
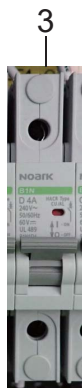
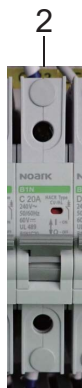
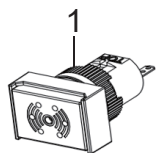


※No. 3～5は補給部品ではありません。
No.3 to 5 are not supply parts.

Q. 吸着ファン / Vacuum Fan

REF.NO	CODE	Q'TY	NAME OF PARTS (品名)
1	D03LZN001	3	BLOWER FAN 120 G304580262

R. 電気部品 / Electrical Components



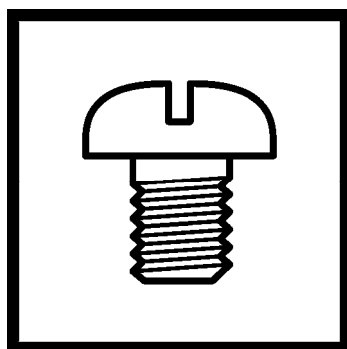
R. 電気部品 / Electrical Components

REF.NO	CODE	Q'TY	NAME OF PARTS (品名)
1	D03MJW001	*	BUZZER G309010097
2	D03MJM001	*	CIRCUIT BREAKER 20A G600000519
3	D03MJK001	*	CIRCUIT BREAKER 4A G600000581
4	D03MK5001	*	2P LATCH CONNECT-1 G300000023
5	D03MK6001	*	2P LATCH CONNECT-2 G300000024
6	D03MK7001	*	4P LATCH CONNECT-1 G300000025
7	D03MK8001	*	4P LATCH CONNECT-2 G300000026
8	D03MJT001	*	SAFTY SWITCH G301050468
9	D03MKG001	*	TERMINAL DP4N-TR-PE G303040133
10	D03MKE001	*	TERMINAL DK4N-TF G303040181
11	D03MJV001	*	PLC G304510042
12	D03MKJ001	*	MOTOR DRIVER BOARD G304510059
13	D03LZ6001	*	COVER SWITCH G304520041
14	D03MJN001	*	SWITCHING POWER 120 G304520064
15	D03MJP001	*	SWITCHING POWER 480 G304520065
16	D03MKF001	*	TERMINAL 20A G304580317
17	D03MKD001	*	TERMINAL DP4N-TR G304580396
18	D03MK9001	*	JUNCTION BOX G304580587
19	D03MKA001	*	JUNCTION BOX G304580589
20	D03LZH001	*	MOTOR DRIVER G304590062
21	D03MJS001	*	SSR-40DAUL G304610008
22	D03MJR001	*	SSR-G3NA G304610026
23	D03MJD001	*	CIRCUIT BREAKER 25A G304630169
24	D03MJG001	*	CIRCUIT BREAKER 2A G304630171
25	D03MJH001	*	CIRCUIT BREAKER 3A G304630172
26	D03MJJ001	*	CIRCUIT BREAKER 5A G304630173
27	D03MJL001	*	CIRCUIT BREAKER 8A G304630174
28	D03MJU001	*	CONTACTOR G304630179
29	D03MKB001	*	FUSE 4A G304630186
30	D03MKC001	*	FUSE 2A G304630187

索引 / Index

CODE	REF.NO	Page	CODE	REF.NO	Page	CODE	REF.NO	Page
D03LZ5001	C - 6	6	D03MKV001	E - 1	10			
D03LZ6001	R - 13	36	D03MKW001	E - 2	10			
D03LZ7001	B - 2	4	D03MKX001	E - 3	10			
D03LZA001	K - 4	22	D03MKY001	E - 4	10			
D03LZB001	O - 4	30	D03MKZ001	E - 5	10			
D03LZC001	C - 5	6	D03ML0001	E - 7	10			
D03LZD001	C - 4	6	D03ML1001	E - 8	10			
D03LZF001	E - 6	10	D03ML2001	F - 1	12			
D03LZG001	L - 1	24	D03ML3001	F - 2	12			
D03LZH001	R - 20	36	D03ML4001	F - 3	12			
D03LZK001	M - 1	26	D03ML5001	F - 4	12			
D03LZL001	M - 3	26	D03ML6001	F - 5	12			
D03LZM001	M - 2	26	D03ML7001	F - Assy	12			
D03LZN001	Q - 1	34	D03MLB001	F - 9	12			
D03MJ001	R - 23	36	D03MLC001	G - Assy	14			
D03MJG001	R - 24	36	D03MLR001	H - 1	16			
D03MJH001	R - 25	36	D03MLS001	H - 3	16			
D03MJJ001	R - 26	36		N - 3	28			
D03MJK001	R - 3	36	D03MLT001	H - 4	16			
D03MJL001	R - 27	36		N - 4	28			
D03MJM001	R - 2	36	D03MLU001	I - 1	18			
D03MJN001	R - 14	36	D03MLV001	I - 2	18			
D03MJP001	R - 15	36	D03MLW001	I - 5	18			
D03MJR001	R - 22	36	D03MLX001	I - 7	18			
D03MJS001	R - 21	36	D03MLY001	I - 8	18			
D03MJT001	R - 8	36	D03MLZ001	I - 9	18			
D03MJU001	R - 28	36	D03MM0001	I - 10	18			
D03MJV001	R - 11	36	D03MM1001	I - 11	18			
D03MJW001	R - 1	36	D03MM2001	I - 12	18			
D03MJX001	H - 2	16	D03MM3001	I - 13	18			
	N - 2	28	D03MM4001	I - 14	18			
D03MJY001	P - 1	32	D03MM5001	J - Assy	20			
D03MJZ001	C - 3	6	D03MM8001	K - 3	22			
D03MK1001	A - 2	2	D03MM9001	M - 4	26			
D03MK2001	A - 4	2	D03MMA001	M - 5	26			
	O - 3	30	D03MMB001	M - 6	26			
D03MK3001	B - 1	4	D03MMC001	O - Assy	30			
D03MK4001	B - 3	4	D03MME001	O - 1	30			
D03MK5001	R - 4	36	D03MMF001	O - 2	30			
D03MK6001	R - 5	36						
D03MK7001	R - 6	36						
D03MK8001	R - 7	36						
D03MK9001	R - 18	36						
D03MKA001	R - 19	36						
D03MKB001	R - 29	36						
D03MKC001	R - 30	36						
D03MKD001	R - 17	36						
D03MKE001	R - 10	36						
D03MKF001	R - 16	36						
D03MKG001	R - 9	36						
D03MKH001	A - 3	2						
D03MKJ001	R - 12	36						
D03MKK001	C - 1	6						
D03MKL001	C - 2	6						
D03MKM001	C - 7	6						
D03MKN001	C - 8	6						
D03MKP001	C - 9	6						
	E - 9	10						
	I - 6	18						
	K - 7	22						
D03MKR001	C - 10	6						
D03MKS001	C - 11	6						
D03MKT001	D - Assy	8						

brother



パーツブック
PARTS BOOK

ブラザー工業株式会社 <https://www.brother.co.jp/>

〒448-0803 刈谷市野田町北地藏山1番地5

BROTHER INDUSTRIES, LTD. <https://www.brother.com>

1-5, Kitajizoyama, Noda-cho, Kariya 448-0803, Japan.

©2026 Brother Industries, Ltd. All Rights Reserved.

DTRX001
I5122293F J/E
2026.03.F(1)