

# PRETREATmaker Basic Pro

COMPACT, CAPABLE, AND READY  
TO SUPPORT VIRTUALLY ANY  
SIZE GARMENT BUSINESS

Upgraded pretreatment features  
to keep your workflow moving

## NEW FEATURES!

- Three tanks for different pretreatment formulas
- Larger front window for improved visibility
- Automatic nozzle cleaning feature every 15 seconds and added drip tray

## ALSO WITH:

- Stepper motor for smooth, accurate spray patterns
- Fully enclosed spray chamber, side rails with splash guards, and drip tray
- Large side door and quick-release nozzle for easy daily cleaning
- Fast switching option to choose from three pretreatment liquids
- Large spray area (15.7" × 17.7")
- Durable zinc and powder-coated housing and compact size (27.5" × 20.5" × 22")



TO UPGRADE YOUR PRETREATMENT CAPABILITIES,  
CONTACT BROTHER DTG AT 866-750-2542 OR VISIT [BrotherDTG.com](https://www.BrotherDTG.com).

**brother**  
at your side

Part #: 80175

PRETREATmaker Basic Pro is a Schulze product, and Brother International Corporation makes no representations or warranties regarding such product.  
© 2024 Brother International Corporation. All rights reserved. Brother Industries, Ltd., Nagoya, Japan

**SCHULZE**



## TECHNICAL SPECIFICATIONS

|  |  |
|--|--|
| <b>SPRAY AREA</b>                      | 5.7 × 17.7" (40 × 45 cm)   |
| <b>SPRAYING METHOD</b>                 | Nozzle is moving over the table (inside)                                   |
| <b>TABLE LENGTH</b>                    | 24.4" (62 cm)  |
| <b>SPRAY DIRECTION</b>                 | Uni / Bi-Directional   |
| <b>NOZZLES</b>                         | 1 Nozzle   |
| <b>NUMBER OF BOTTLES</b>               | Three Pretreat (2 Liter Bottles), One Water (2 Liter), One Waste (2 Liter) |
| <b>MOTOR</b>                           | Stepper Motor  |
| <b>PUMPS</b>                           | One pump   |
| <b>DIMENSIONS</b>                      | L 27.5" × W 20.5" × H 22.0" (L 70 × W 52 × H 56 cm)                        |
| <b>DIMENSIONS (TRANSPORT)</b>          | L 31.5" × W 22.8" × H 28.7" (L 80 × W 58 × H 73 cm)                        |
| <b>WEIGHT</b>                          | 84 lbs. (38 kg)  |
| <b>WEIGHT (TRANSPORT)</b>              | 104 lbs. (47 kg)   |
| <b>CONNECTION</b>                      | 220/230 or 110/120 VAC (automatic switch)                                  |
| <b>CONSUMPTION</b>                     | 150 W  |
| <b>OPERATING PRESSURE (PRECOATING)</b> | Max. 7 bar   |
| <b>INCLUDED IN DELIVERY</b>            | Replacement nozzle, replacement filter and ultrasound cleaner              |
| <b>ADDITIONAL CHARACTERISTICS</b>      | Zinc- and powder-coated housing  |



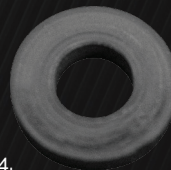
1.



2.



3.



4.



5.

1. Schulze Pretreat Cleaner 807068
2. Nozzle (green) TP9501EVS
3. Filter 807015

4. O-ring washer 803368
5. Quick exchange cap 803368